

YC4E160-33(E3717)柴油机

零件图册

Parts Catalogue of YC4E160-33(E3717) Diesel Engine

广西玉柴机器股份有限公司

Guangxi Yuchai Machinery Co., Ltd.

2011.10

October. 2011

前 言

Foreword

感谢您选用广西玉柴机器股份有限公司的产品，并感谢您阅读《YC4E160-33(E3717)柴油机零件图册》！

Thanks for using Yuchai engine and reading the “Parts Catalogue of YC4E160-33(E3717) Diesel Engine” !

玉柴的服务宗旨是：“倾我所有、尽我所能、竭诚用户、诚信天下”，为了更好地履行玉柴的服务宗旨，我们编印了 YC4E160-33(E3717)柴油机零件图册》，希望本图册可以让用户更好地认识了解玉柴产品的结构与配置，方便用户使用、维修和购置零配件。

With the aim to fulfill our company service tenet, i. e. “striving all out to serve the customers, spending full sincerity to confidence the world”, we compiled and printed this “Parts Catalogue of YC4E160-33(E3717)Diesel Engine”. We hope this “Parts Catalogue of YC4E160-33(E3717)Diesel Engine” will help you to understand the structure and configuration of Yuchai’ s YC4E160-33(E3717)diesel engines, so to operate and maintain them easily.

本零件图册是根据 2011 年 10 月相关生产图样、资料编制而成的。图册中列出了 YC4E160-33(E3717)柴油机的全部零部件目录。

This “Parts Catalogue of YC4E160-33(E3717) Diesel Engine” is compiled by basing on the production samples and technical documents in October 2011, and covers the engine model of YC4E160-33(E3717) diesel engine.

随着产品的不断改进提高和用户不断提出新的要求，《YC4E160-33(E3717)柴油机零件图册》中的有关内容将会有不同程度的变更，玉柴保留在不预先通知的情况下进行修改的权利，具体配置情况应以当时产品技术文件为依据。

As production improvements and consumer’ s requirements are constantly brought up, the content of this “Parts Catalogue of YC4E160-33(E3717)Diesel Engine” must be changed at a certain extent, which Yuchai reserves the right to modify without formal notification beforehand. The engine’ s idiographic configuration is according to its technical documents.

本零件图册编写不足之处在所难免，敬请多多指教，使之渐臻完善。谢谢！

Deficiencies may appear in this “Part Catalogue of YC4E160-33(E3717)Diesel Engine” , and your comments and suggestions are appreciated honestly!

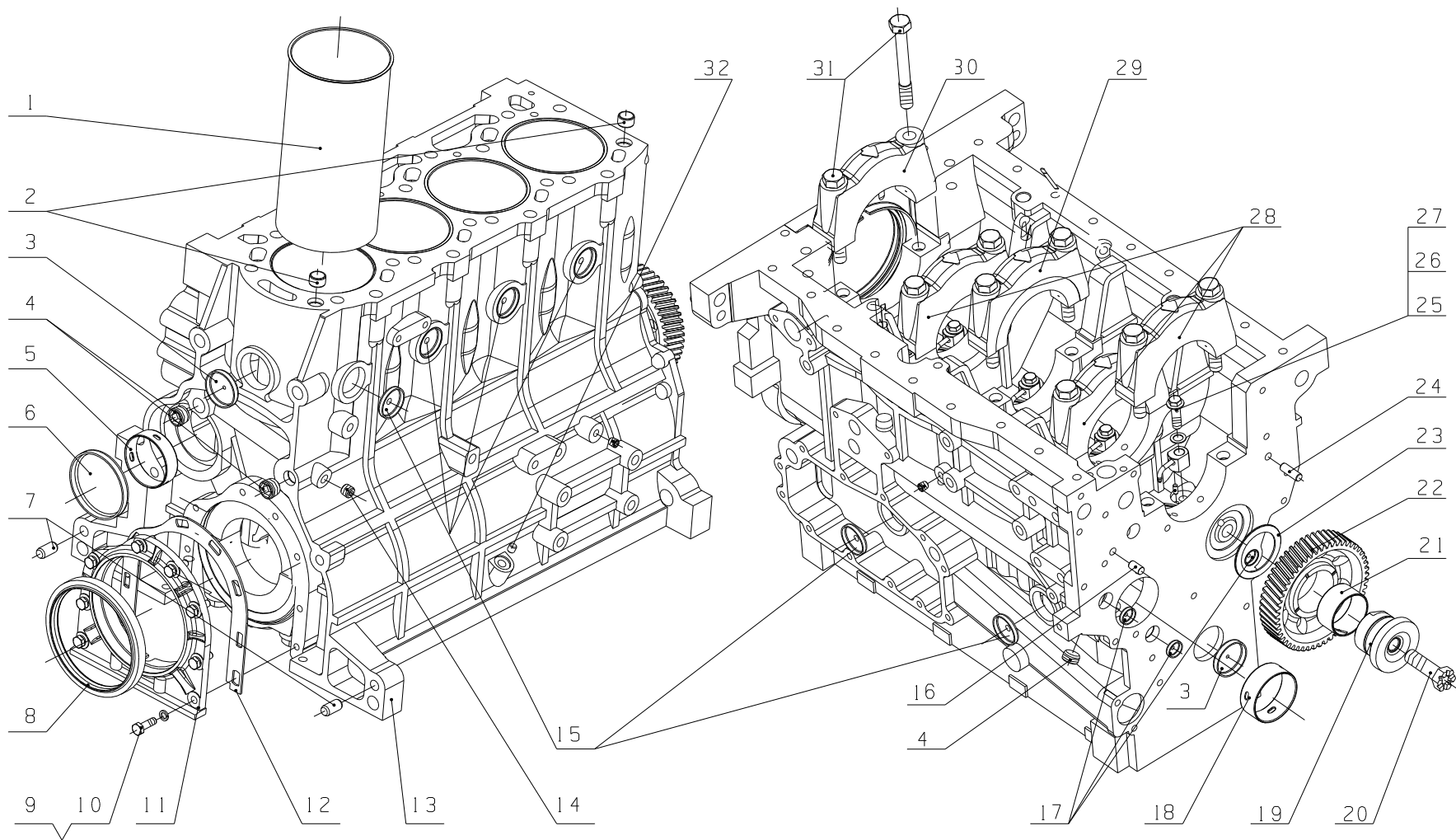
目 录 CONTENT

| 序号 No. | 图 号 Parts No. | 名 称 | Parts Name | 页数 Page | 备注 Remark |
|--------|-------------------|-------------|---|---------|-----------|
| 1 | E1202-1002010/03 | 气缸体部件 | Cylinder Block Assembly | | |
| 2 | E1202-1002200/10 | 齿轮室部件 | Gear Housing Parts | | |
| 3 | E12F7-1003000/01 | 气缸盖及气缸盖罩总成 | Cylinder Head& Cylinder Head Cover Assembly | | |
| 4 | E0400-1004000/04 | 活塞连杆总成 | Piston& Connecting Rod Assembly | | |
| 5 | E1223-1005000/04 | 曲轴减振器总成 | Crankshaft Vibration Damper Assembly | | |
| 6 | 530-1006000/07 | 凸轮轴部件 | Camshaft Parts | | |
| 7 | 530-1007000/07 | 配气机构 | Valve Train System | | |
| 8 | E1202-1008100/05 | 进气管部件 | Intake Pipe Parts | | |
| 9 | E1202-1008200/03 | 排气管部件 | Exhaust Pipe Parts | | |
| 10 | E05FA-1009000/03 | 油底壳总成 | Oil Sump Assembly | | |
| 11 | 530-1010000C/05 | 机油集滤器 | Oil Strainer Assembly | | |
| 12 | 1530-1011000/08 | 机油泵总成 | Oil Pump Assembly | | |
| 13 | 530-1012000/02 | 机油滤清器部件 | Oil Filter Assembly | | |
| 14 | E1202-1013000/04 | 机油冷却器总成 | Oil Cooler Assembly | | |
| 15 | E12G1-1014000/13 | 曲轴箱通风装置总成 | Crankcase Ventilation Device Assembly | | |
| 16 | E12F7-1015000 /01 | 发动机起动辅助装置总成 | Start Auxiliary Device Assembly | | |
| 17 | E1202-1028000/02 | 油标尺总成 | Oil Dipstick Assembly | | |
| 18 | E1297-1104000/01 | 供给系管路总成 | Fuel Supply Pipeline Assembly | | |

| | | | | | |
|----|------------------|------------|--|--|--|
| 19 | B8350-1105000/03 | 柴油滤清器总成 | Fuel Filter Assembly | | |
| 20 | E36Y1-1111000/03 | 喷油泵总成 | Injection Pump Assembly | | |
| 21 | E0800-1112000/03 | 喷油器总成 | Injector Assembly | | |
| 22 | E12F5-1115000 | 断油机构总成 | Fuel Lock-off System Assembly | | |
| 23 | E3798-1118000/03 | 增压器总成 | Turbocharger Assembly | | |
| 24 | E1297-1130000/01 | 燃油喷射泵附件总成 | Fuel Injection Pump Accessory Assembly | | |
| 25 | E3299-1305000/02 | 放水阀总成 | Water Drain Valve Assembly | | |
| 26 | E02F6-1306000/07 | 调温器总成 | Thermostat Assembly | | |
| 27 | E13F2-1307000/04 | 水泵总成 | Water Pump Assembly | | |
| 28 | E32S1-1308000/02 | 风扇总成 | Fan Assembly | | |
| 29 | E3617-1600000/02 | 动力输出总成 | Power Output Assembly | | |
| 30 | J41F1-3407000/01 | 转向泵总成 | Steering Pump Assembly | | |
| 31 | E0208-3509000/12 | 气制动空气压缩机总成 | Pneumatic Air Compressor Assembly | | |
| 32 | E1108-3701000/01 | 发电机总成 | Alternator Assembly | | |
| 33 | E24FC-3708000/01 | 起动机总成 | Starter Assembly | | |
| 34 | E3617-3800000/01 | 仪表感应器总成 | Instrument & Sensor Assembly | | |
| 35 | E3600-3904000/01 | 铭牌 | Nameplate Assembly | | |
| 36 | E1299-8104000 | 空调压缩机总成 | Air compressor assembly | | |

EWP=Easy wear part (易损件)

1、E0400-1002010/11 气缸体部件 Cylinder Block Assembly



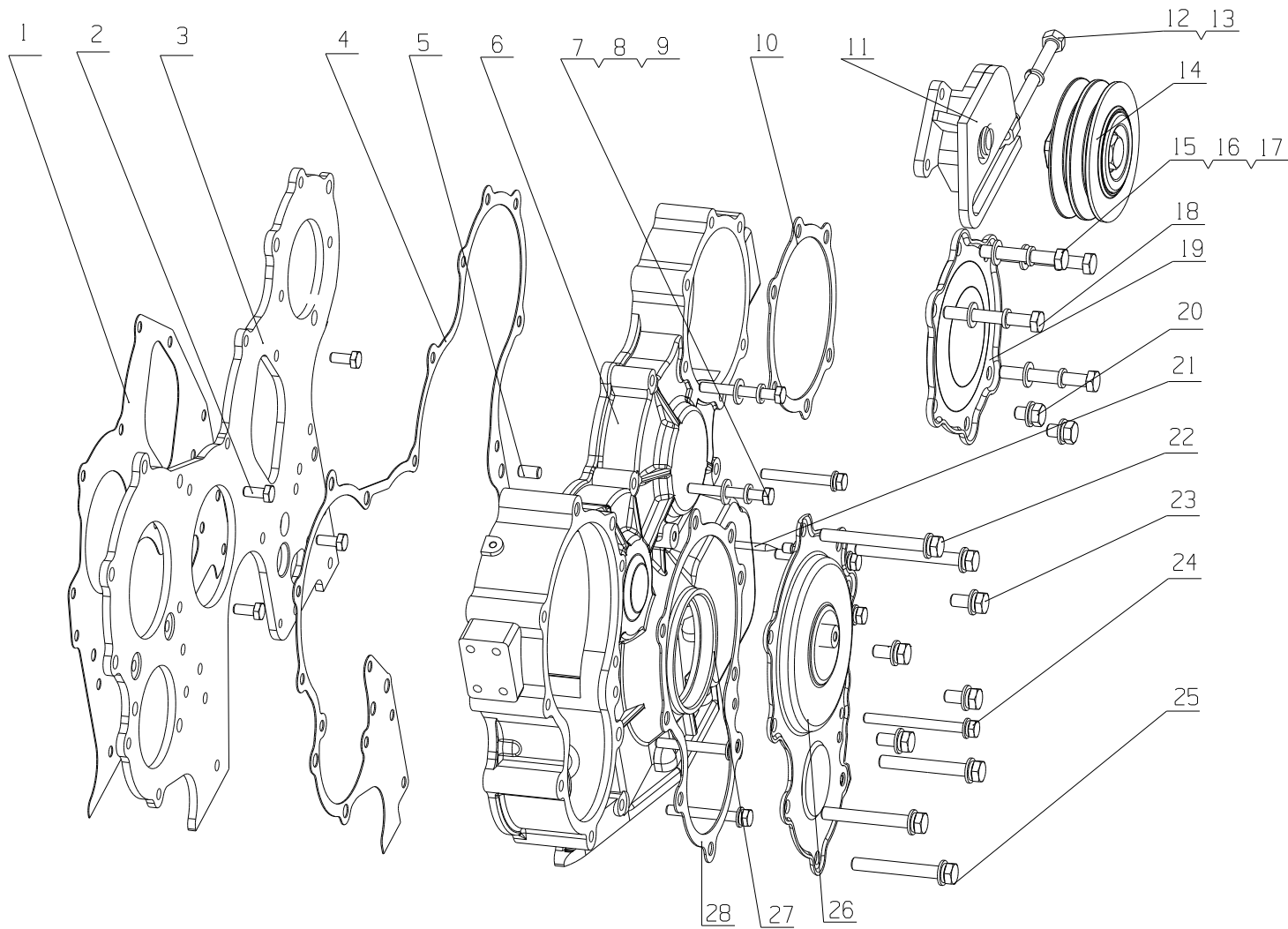
1、E0400-1002010/11 气缸体部件 Cylinder Block Assembly

| 序号 No. | 图 号 Part No. | 名 称 | Part Name | 数量 Qty. | 备 注 Remark |
|--------|-----------------|------------|--------------------------------|---------|----------------------------------|
| 1 | 530-1002026C | 气缸套 | Cylinder liner | 4 | |
| 2 | 150-1002011 | 定位套 | Locating sleeve | 2 | |
| 3 | 150-1002021 | 碗形塞片 | Bowl type plug | 2 | |
| 4 | 150-1002022A | 主油道螺塞 | Main oil galley screw plug | 3 | |
| 5 | 530-1002134 | 凸轮轴衬套II | Camshaft bushing II | 4 | 易损件 EWP |
| 6 | Q72270 | 碗形塞片 70 | Bowl-type plug | 1 | |
| 7 | 150-1002016 | 定位销 | Locating pin | 2 | |
| 8 | YC209-100125FL | 油封 100X125 | Oil seal 100X125 | 1 | 易损件 EWP |
| | YC209-B100125PL | 油封 100X125 | Oil seal 100X125 | 1 | 选装 Optional |
| | YC209-C100125PL | 油封 100X125 | Oil seal 100X125 | 1 | 选装 Optional |
| 9 | Q150B0825 | 螺栓 M8X25 | Bolt M8X25 | 8 | |
| 10 | Q40308 | 垫圈 8 | Washer8 | 8 | |
| 11 | 530-1002501 | 曲轴后油封座 | Crankshaft rear oil seal seat | 1 | |
| 12 | 150-1002063B | 后油封座垫片 | Rear oil seal seat gasket | 1 | 易损件 EWP |
| 13 | E0400-1002015B | 气缸体 | Cylinder block | 1 | |
| | E0400-1002015B* | 气缸体组件 | Cylinder block assembly | 1 | 包含(including)3、13、15、18、29、30、31 |
| 14 | Q61902 | 螺塞 NPT 1/4 | Screw plug NPT 1/4 | 1 | |
| 15 | 150-1002019 | 碗形塞片 | Bowl type plug | 6 | |
| 16 | 530-1002028 | 定位销 | Locating pin | 1 | |
| 17 | 150-1002013A | 碗形塞片 | Bowl type plug | 3 | |
| 18 | 530-1002120 | 凸轮轴衬套 | Camshaft bushing | 1 | 易损件 EWP |
| 19 | G6000-1002306 | 惰齿轮轴 | Idler gear shaft | 1 | |
| 20 | 530-1002304 | 惰齿轮轴螺栓 | Idler gear shaft bolt | 1 | |
| 21 | 150-1002043A | 惰齿轮衬套 | Idler gear bushing | 1 | 易损件 EWP |
| 22 | 150-1002041A | 惰齿轮 | Idle gear | 1 | |
| 23 | 150-1002045 | 惰齿轮防磨板 | Idler gear anti-friction plate | 1 | |

| | | | | | |
|----|----------------|-----------------|-------------------------|----|--|
| 24 | 150-1002025 | 定位销 | Locating pin | 1 | |
| 25 | E0400-1002170 | 喷嘴焊接件 | Nozzle weldment | 1 | |
| 26 | 430-1002163 | 垫圈 | Washer | 1 | |
| 27 | G0100-1002162A | 过油螺栓 | Hollow bolt for oil | 1 | |
| 28 | 150-1002024 | 主轴承盖 | Main bearing cap | 3 | |
| 29 | 150-1002023 | 止推主轴承盖 | Main thrust bearing cap | 1 | |
| 30 | 150-1002014 | 主轴承盖(后) | Main bearing cap (rear) | 1 | |
| 31 | 530-1002017 | 主轴承盖螺栓 | Main bearing cap bolt | 10 | |
| 32 | 6105Q-1002022 | 铝堵 ϕ 10X10 | Aluminium plug | 1 | |

EWP=Easy wear part (易损件)

2、E1202-1002200/10 齿轮室部件 Gear Housing Parts



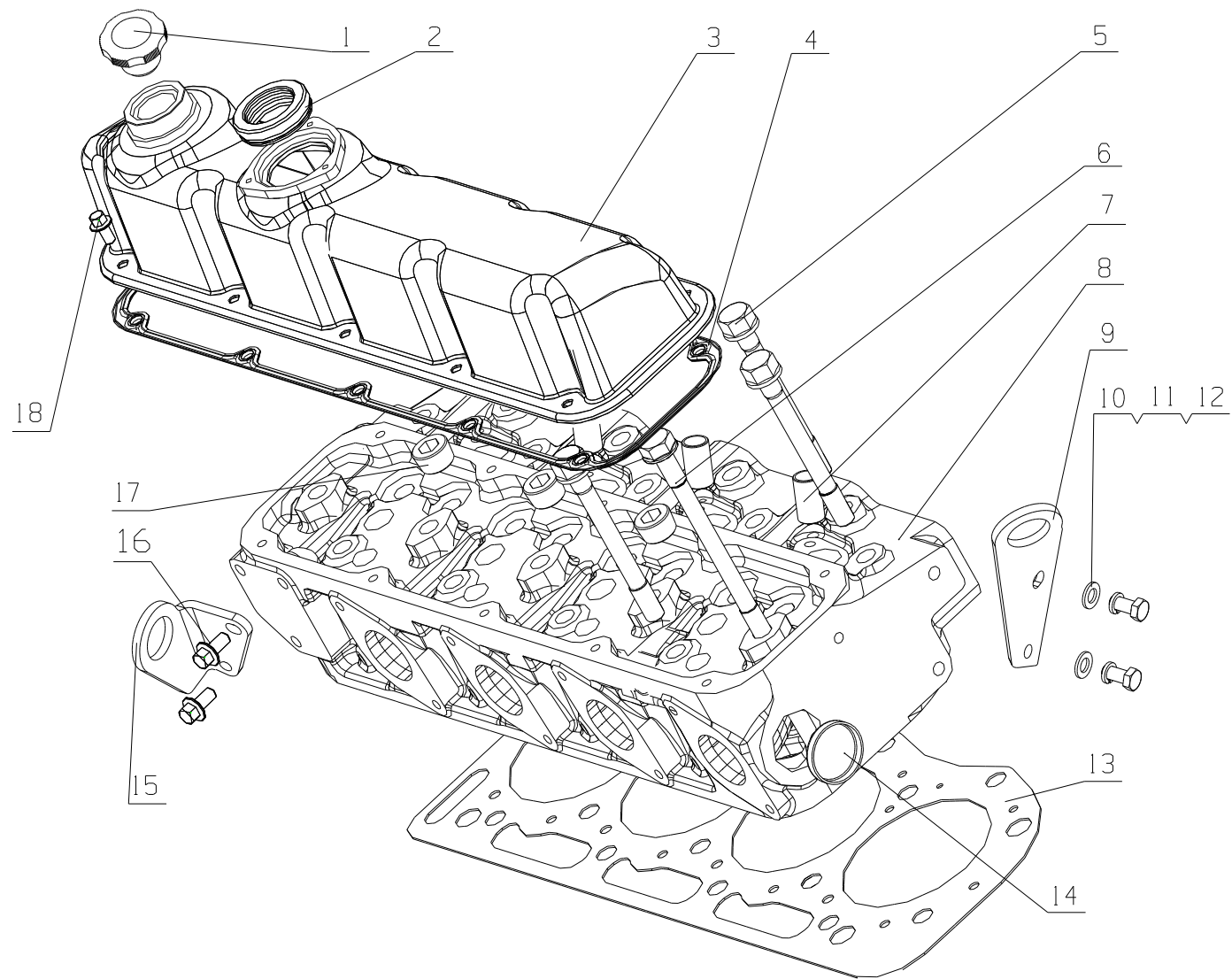
2、E1202-1002200/10 齿轮室部件 Gear Housing Parts

| 序号 No. | 图 号 Part No. | 名 称 | Part Name | 数量 Qty. | 备 注 Remark |
|--------|---------------|-----------|-------------------------------------|---------|------------|
| 1 | 530-1002204A | 齿轮室盖板垫片 | Gear housing cover plate gasket | 1 | 易损件 EWP |
| 2 | Q150B0818TF2 | 螺栓 M8×18 | Bolt M8×18 | 4 | |
| 3 | 2530-1002033 | 齿轮室盖板 | Gear housing cover plate | 1 | |
| 4 | 2530-1002032 | 齿轮室垫片 | Gear housing gasket | 1 | 易损件 EWP |
| 5 | 530-1002028 | 定位销 | Locating pin | 1 | |
| 6 | 2530-1002201 | 齿轮室 | Gear housing | 1 | |
| 7 | Q40108 | 垫圈 8 | Lock Washer 8 | 8 | |
| 8 | Q40308 | 垫圈 8 | Lock Washer 8 | 8 | |
| 9 | Q150B0865 | 螺栓 M8X65 | Bolt M8X65 | 7 | |
| 10 | 2530-1002039 | 空压机齿轮盖垫片 | Gear cover washer, air compressor | 1 | 易损件 EWP |
| 11 | 1531-1002100B | 张紧轮支架焊接件 | Tension pulley bracket weldment | 1 | |
| 12 | 186-1002056A | 调节螺栓 | Adjusting bolt | 1 | |
| 13 | Q40310 | 垫圈 10 | Washer10 | 1 | |
| 14 | 530-1002110A | 张紧轮部件 | Tension pulley parts | 1 | |
| 15 | Q40110 | 垫圈 10 | Washer10 | 15 | |
| 16 | Q40310 | 垫圈 10 | Washer10 | 15 | |
| 17 | Q150B1065 | 螺栓 M10X65 | Bolt M10X65 | 1 | |
| 18 | Q150B1075 | 螺栓 M10X75 | Bolt M10X75 | 3 | |
| 19 | 2530-1002038 | 空压机齿轮盖 | Gear cover, air compressor | 1 | |
| 20 | Q150B1016 | 螺栓 M10X16 | Bolt M10X16 | 2 | |
| 21 | 530-1002037 | 上止点指针 | TDC pointer | 1 | |
| 22 | Q150B1095 | 螺栓 M10X95 | Bolt M10X95 | 2 | |
| 23 | Q150B1022 | 螺栓 M10X22 | Bolt M10X22 | 4 | |
| 24 | Q150B0890 | 螺栓 M8X90 | Bolt M8X90 | 1 | |
| 25 | Q150B1078 | 螺栓 M10X78 | Bolt M10X78 | 3 | |
| 26 | E0209-1002110 | 喷油泵齿轮盖焊接件 | Gear cover weldment, Injection pump | 1 | |

| | | | | | |
|----|-----------------|----------|-----------------------------------|---|-------------|
| 27 | YC209-065090FR | 油封 65X90 | Oil seal 65X90 | 1 | 易损件 EWP |
| | YC209-C065090PR | 油封 65X90 | Oil seal 65X90 | 1 | 选装 Optional |
| 28 | 2530-1002036C | 喷油泵齿轮盖垫片 | gear cover gasket, injection pump | 1 | 易损件 EWP |

EWP=Easy wear part (易损件)

3、E12F7-1003000/01 气缸盖及气缸盖罩总成 Cylinder Head& Cylinder Head Cover Assembly

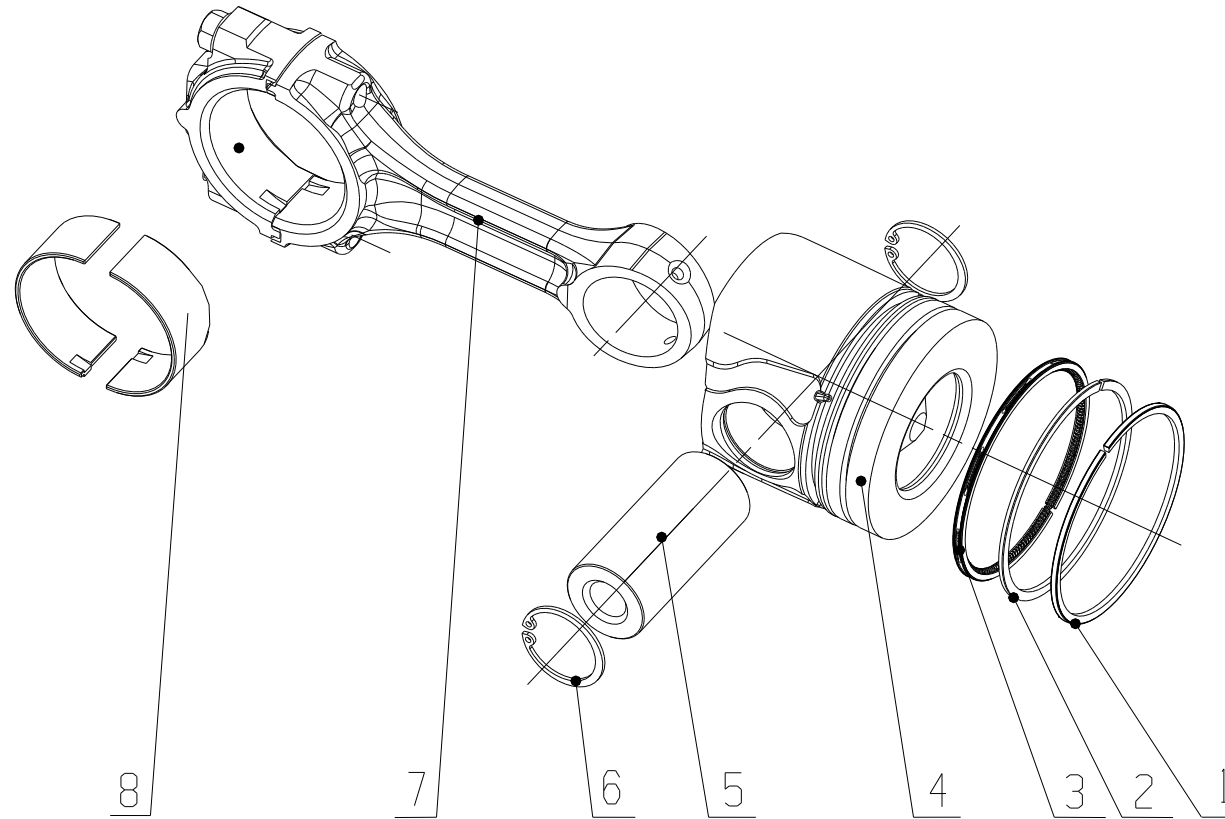


3、E12F7-1003000/01 气缸盖及气缸盖罩总成 Cylinder Head& Cylinder Head Cover Assembly

| 序号 No. | 图 号 Part No. | 名 称 | Part Name | 数量 Qty. | 备 注 Remark |
|--------|-----------------|------------|----------------------------|---------|------------|
| 1 | 150-1003040F | 加机油口盖组件 | Oil filler cap assembly | 1 | |
| 2 | E0200-1003023A | 密封圈 | Seal ring | 1 | 易损件 EWP |
| 3 | E05FA-1003240A | 气缸罩组件 | Cylinder cover groupware | 1 | |
| 4 | 530-1003051 | 气缸盖罩垫片 | Cylinder head cover gasket | 1 | 易损件 EWP |
| 5 | 330-1003014B | 气缸盖短螺栓 | Cylinder cover short bolt | 13 | |
| 6 | 530-1003052 | 气缸盖螺栓(长) | Cylinder head bolt (long) | 5 | |
| 7 | 530-1003019 | 镶套 | Bushing fitting | 4 | |
| 8 | E0200-1003171B | 气缸盖 | Cylinder cover | 1 | |
| | E0200-1003171B* | 气缸盖组件 | Cylinder cover subassembly | 1 | |
| 9 | E0201-1003056 | 后吊耳 | Rear lifter | | |
| 10 | Q40112 | 垫圈 12 | Washer 12 | 2 | 易损件 EWP |
| 11 | Q40312 | 垫圈 12 | Washer 12 | 2 | 易损件 EWP |
| 12 | Q150B1225 | 螺栓 M12X25 | Bolt M12X25 | 2 | |
| 13 | 530-1003051E | 气缸盖垫片 | Cylinder head gasket | 1 | 易损件 EWP |
| 14 | 150-1002021 | 碗形塞片 | Bowl-type plug | 1 | |
| 15 | 530-1003054A | 吊耳 | Lifter | 1 | |
| 16 | Q1841220 | 螺栓 M12X20 | Bolt M12X20 | 2 | |
| 17 | Q61906 | 螺塞 NPT 3/4 | Screw plug | 4 | |
| 18 | Q1840816 | 螺栓 M8X16 | Bolt M8X16 | 10 | |

EWP=Easy wear part (易损件)

4、E0400-1004000/04 活塞连杆总成 Piston& Connecting Rod Assembly

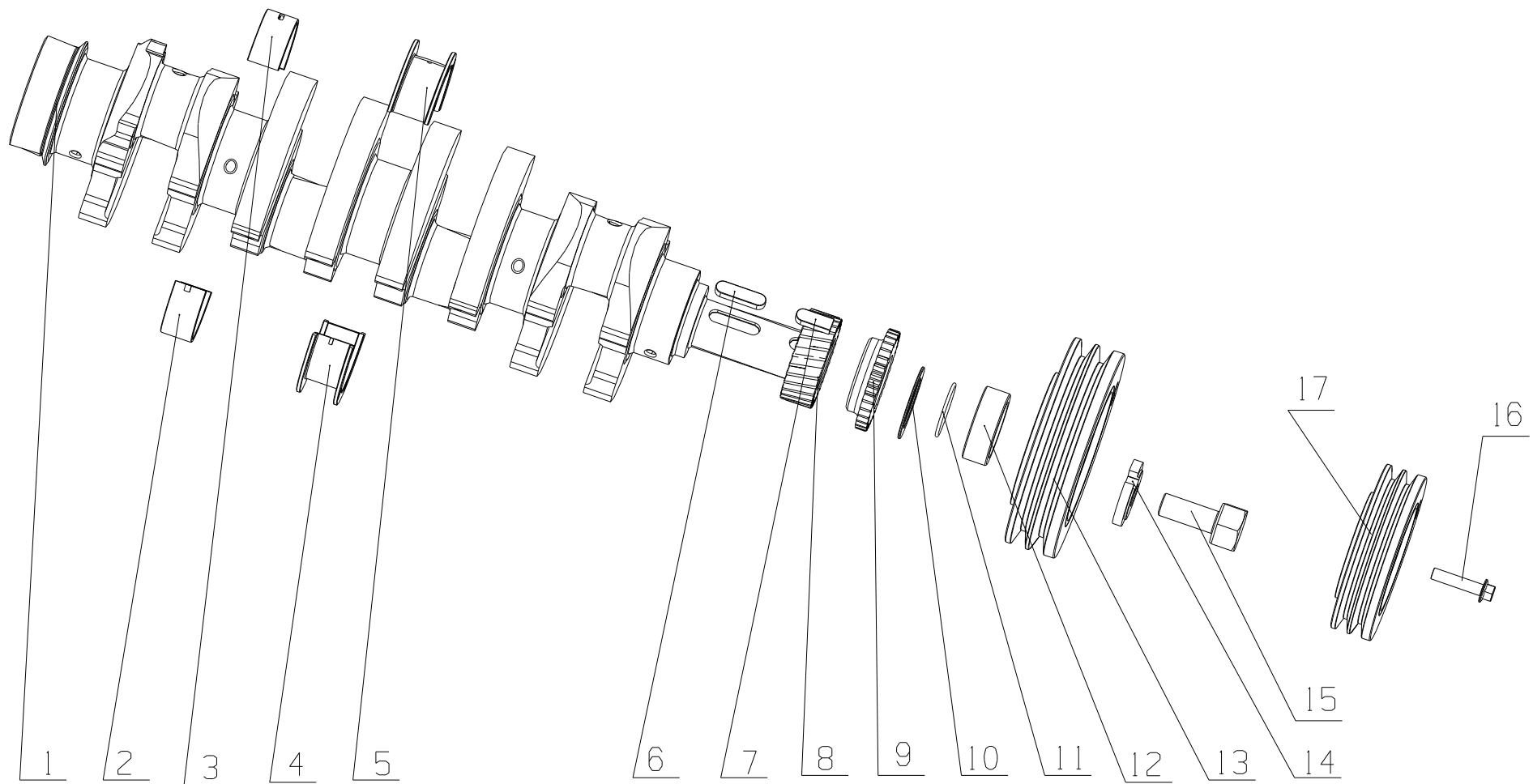


4、E0400-1004000/04 活塞连杆总成 Piston& Connecting Rod Assembly

| 序号 No. | 图 号 Part No. | 名 称 | Part Name | 数量 Qty. | 备 注 Remark |
|--------|--------------------|-------|------------------------|---------|-------------|
| 1 | 530-1004016 | 第一道气环 | Compression ring I | 4 | 易损件 EWP |
| 2 | 530-1004017A | 第二道气环 | Compression ring II | 4 | 易损件 EWP |
| 3 | 530-1004030 | 油环总成 | Oil ring assembly | 4 | 易损件 EWP |
| | 530-1004016* | 活塞环组件 | Piston ring assembly | 1 | |
| 4 | E0400-1004001A-501 | 活塞 | Piston | 4 | 易损件 EWP |
| | E0400-1004001A | 活塞 | Piston | 4 | 选装 Optional |
| | E0400-1004001A-378 | 活塞 | Piston | 4 | 选装 Optional |
| 5 | 430-1004019 | 活塞销 | Piston pin | 4 | |
| 6 | Q43040 | 挡圈 40 | Retaining ring | 8 | |
| 7 | E0200-1004200 | 连杆部件 | Connecting rod parts | 4 | |
| 8 | 530-1004019 | 连杆轴瓦 | Connecting rod bearing | 8 | 易损件 EWP |

EWP=Easy wear part (易损件)

5、E1223-1005000/04 曲轴减振器总成 Crankshaft Vibration Damper Assembly

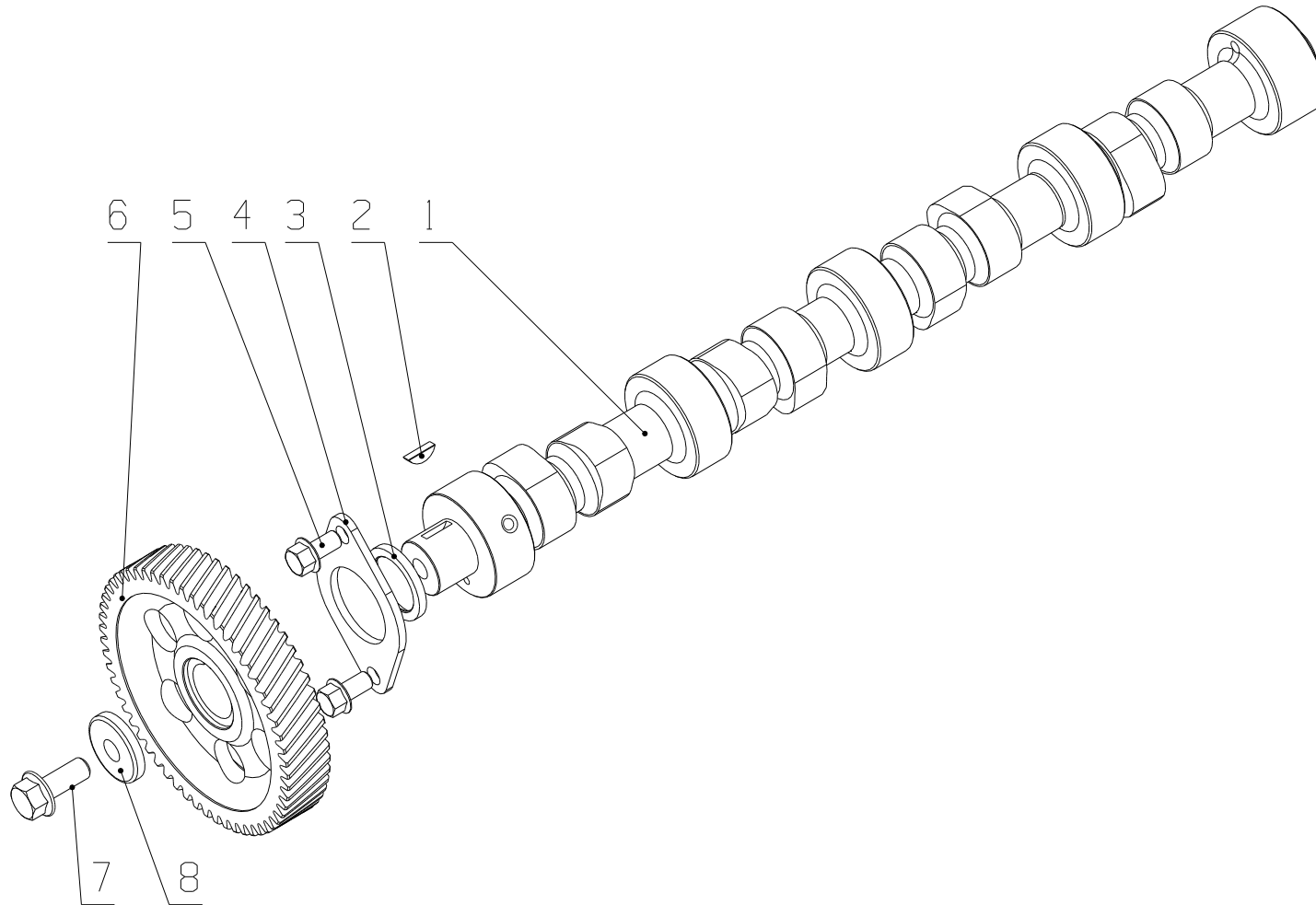


5、E1223-1005000/04 曲轴减振器总成 Crankshaft Vibration Damper Assembly

| 序号 No. | 图 号 Part No. | 名 称 | Part Name | 数量 Qty. | 备 注 Remark |
|--------|-----------------|----------------|---|---------|------------|
| 1 | E0200-1005015 | 曲轴 | Crankshaft | 1 | |
| 2 | 530-1005014A | 主轴瓦(下) | Main bearing shell (lower) | 4 | 易损件 EWP |
| 3 | 530-1005013A | 主轴瓦(上) | Main bearing shell (upper) | 4 | 易损件 EWP |
| 4 | 530-1005012A | 曲轴止推轴瓦(下) | Crankshaft thrust bearing shell(lower) | 1 | 易损件 EWP |
| 5 | 530-1005011A | 曲轴止推轴瓦(上) | Crankshaft thrust bearing shell (upper) | 1 | 易损件 EWP |
| | 530-1005012A*-H | 曲轴止推轴瓦(红色) | Crankshaft thrust bearing shell (red) | 1 | |
| | 530-1005012A*-L | 曲轴止推轴瓦(蓝色) | Crankshaft thrust bearing shell (blue) | 1 | |
| 6 | Q5511245 | 键 12X45 | Key 12X45 | 1 | |
| 7 | BJ100-1005023 | 曲轴平键 | Key | 1 | |
| 8 | 530-1005016 | 曲轴正时齿轮 | Crankshaft timing gear | 1 | |
| 9 | 1530-1005022 | 机油泵驱动齿轮 | Fuel pump drive gear | 1 | |
| 10 | 530-1005024 | 垫片 | Washer | 1 | |
| 11 | YC208-B04370F | O 形圈 2.65X43.7 | O-ring 2.65X43.7 | 1 | 易损件 EWP |
| 12 | 530-1005017A | 皮带轮隔套 | Belt pulley spacer sleeve | 1 | |
| 13 | 530-1005030D | 皮带轮减振器总成 | Belt pulley vibration damper assembly | 1 | |
| 14 | 530-1005018B | 曲轴头垫片 I | Crankshaft end shaft I | 1 | |
| 15 | 530-1005021B | 皮带轮压紧螺栓 | Belt pulley tension bolt | 1 | |
| 16 | Q1841045TF2 | 螺栓 M10×45 | Bolt M10×45 | 4 | |
| 17 | 1533-1005016 | 附加皮带轮 | Additional belt pulley | 1 | |

EWP=Easy wear part (易损件)

6、530-1006000/07 凸轮轴部件 Camshaft Parts

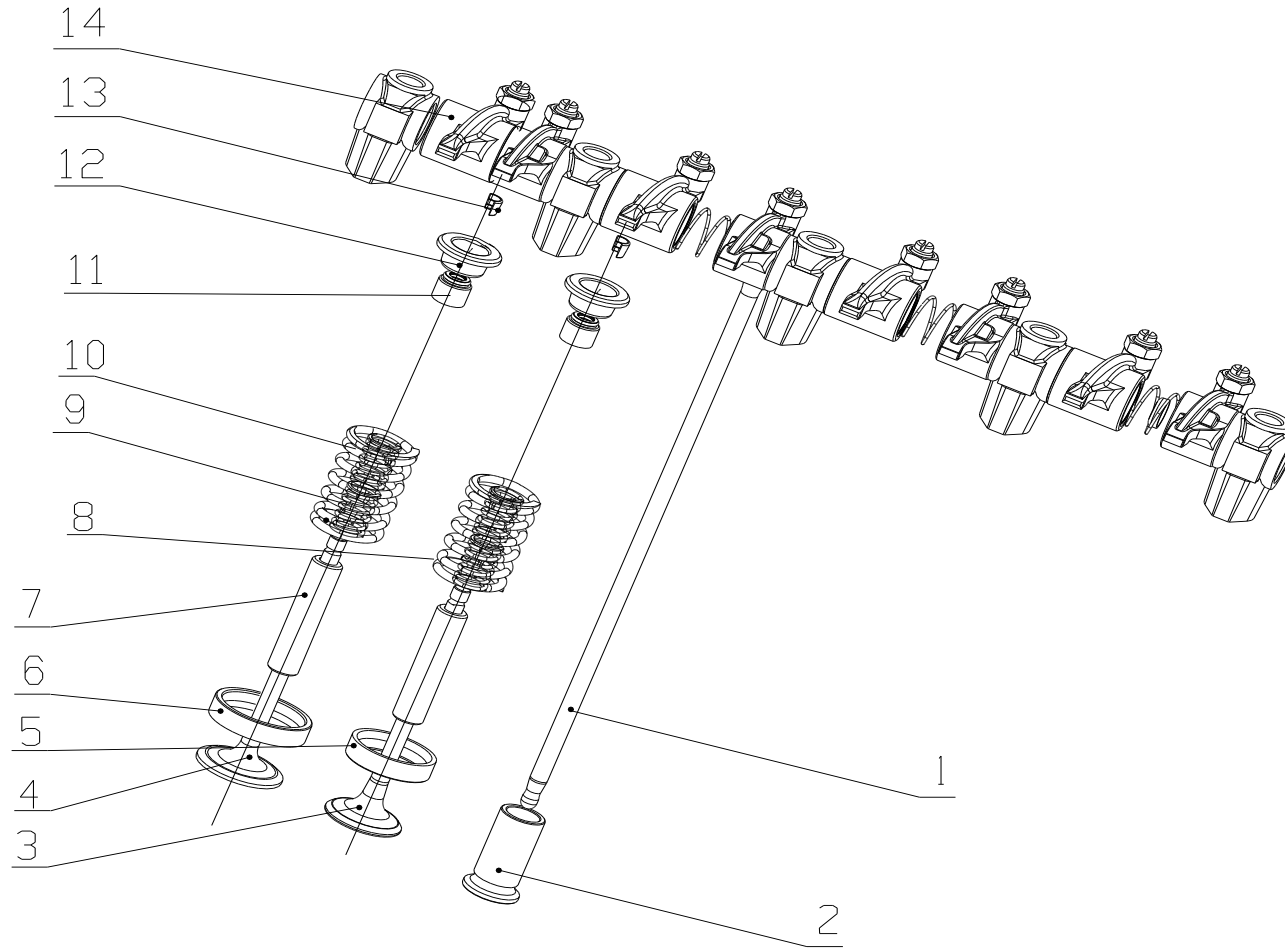


6、530-1006000/07 凸轮轴部件 Camshaft Parts

| 序号 No. | 图 号 Part No. | 名 称 | Part Name | 数量 Qty. | 备 注 Remark |
|--------|----------------|------------|-----------------------------------|---------|------------|
| 1 | 530-1006001A | 凸轮轴 | Camshaft | 1 | |
| 2 | GB/T1096-C0520 | 键 C5X20 | KeyC5X20 | 1 | |
| 3 | 150-1006014 | 隔套-凸轮轴正时齿轮 | Space sleeve-camshaft timing gear | 1 | |
| 4 | 150-1006013 | 凸轮轴止推垫片 | Camshaft thrust gasket | 1 | |
| 5 | Q/YC207-1020 | 螺栓 M10×20 | Bolt M10×20 | 2 | |
| 6 | 150-1006012 | 凸轮轴正时齿轮 | Camshaft timing gear | 1 | |
| 7 | Q/YC207-1230 | 螺栓 M12×30 | Bolt M12×30 | 1 | |
| 8 | 150-1006011 | 垫圈-凸轮轴正时齿轮 | Washer-Camshaft timing gear | 1 | |

EWP=Easy wear part (易损件)

7、530-1007000/07 配气机构 Valve Train System

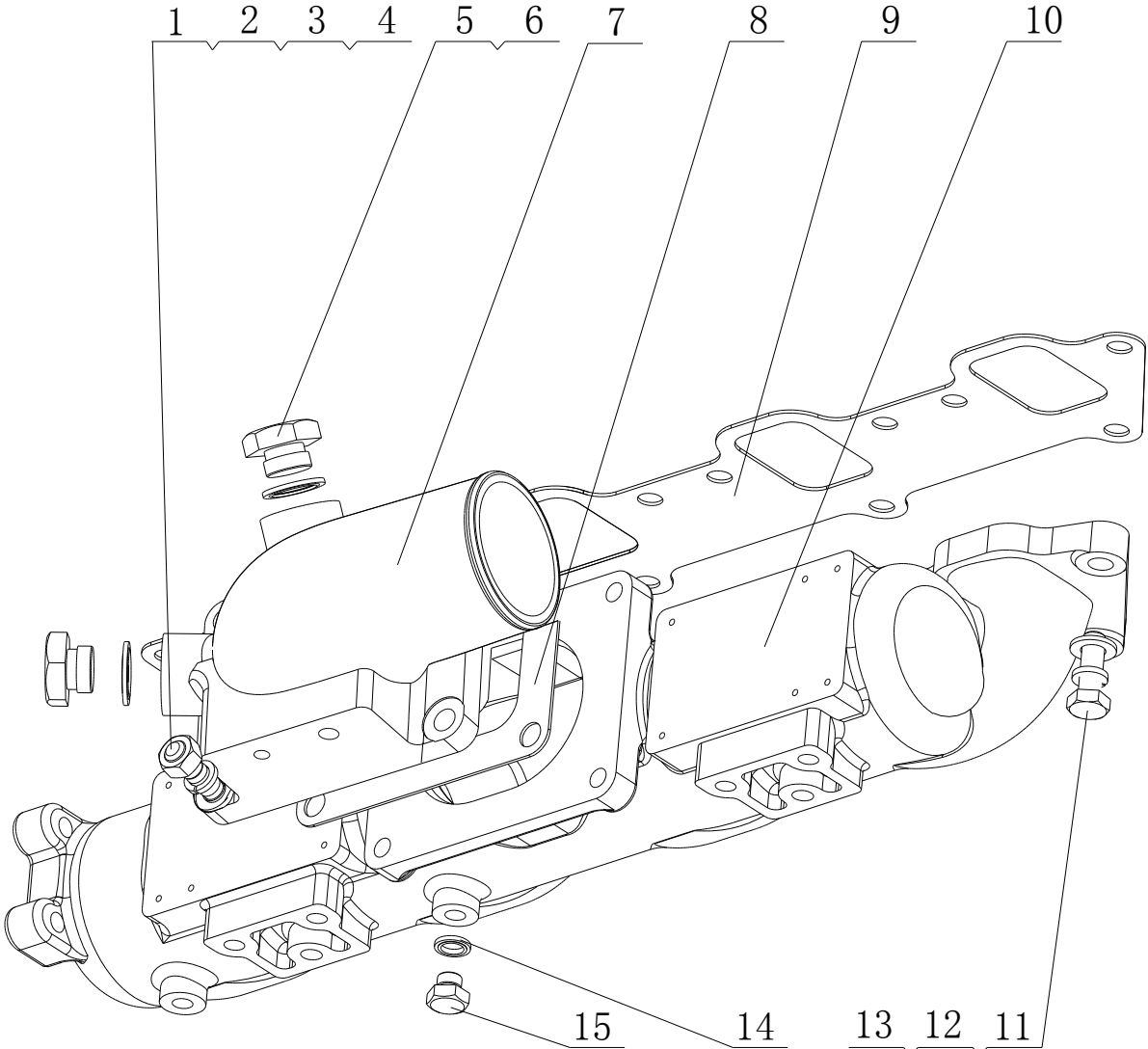


7、530-1007000/07 配气机构 Valve Train System

| 序号 No. | 图 号 Part No. | 名 称 | Part Name | 数量 Qty. | 备 注 Remark |
|--------|--------------|--------|---------------------------------|---------|------------|
| 1 | 530-1007002 | 推杆 | Tappet | 8 | |
| 2 | 530-1007001 | 挺柱 | Push rod | 8 | |
| 3 | 530-1007014D | 排气门 | Exhaust valve | 4 | |
| 4 | 530-1007023D | 进气门 | Intake valve | 4 | |
| 5 | 530-1003174 | 排气门座圈 | Exhaust valve seat ring | 4 | |
| 6 | 530-1003173 | 进气门座圈 | Intake valve seat ring | 4 | |
| 7 | 530-1007015 | 气门导管 | Valve guide pipe | 8 | |
| 8 | 530-1003118 | 排气门弹簧 | Exhaust valve spring | 4 | |
| 9 | 530-1003120 | 进气门弹簧 | Intake valve spring | 8 | |
| 10 | 530-1007026 | 气门内弹簧 | valve inside spring | 8 | |
| 11 | 150-1007016B | 气门杆油封 | Valve stem seal | 8 | |
| 12 | 530-1007022A | 气门弹簧上座 | Valve spring upper seat | 8 | |
| 13 | 150-1007021E | 气门锁夹 | Valve lock | 16 | |
| 14 | 530-1007030 | 摇臂和摇臂轴 | Rocker-arm and rocker-arm shaft | 1 | |

EWP=Easy wear part (易损件)

8、E1202-1008100/05 进气管部件 Intake Pipe Parts

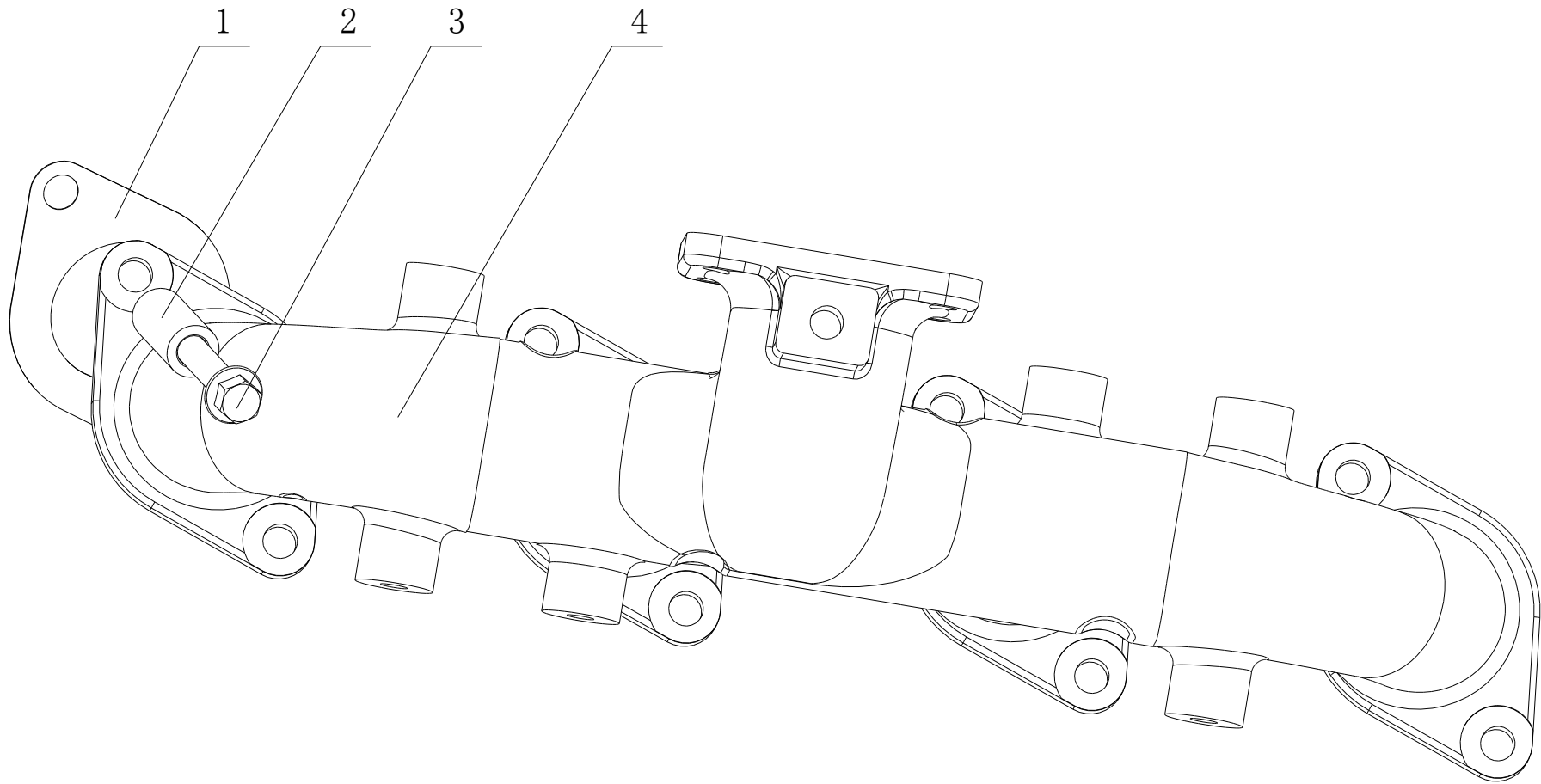


8、E1202-1008100/05 进气管部件 Intake Pipe Parts

| 序号 No. | 图 号 Part No. | 名 称 | Part Name | 数量 Qty. | 备 注 Remark |
|--------|----------------|------------|-------------------------------|---------|------------|
| 1 | Q1201030 | 螺柱 M10X30 | Stud M10X30 | 4 | |
| 2 | Q340B10 | 螺母 M10 | Nut M10 | 4 | |
| 3 | Q40310 | 垫圈 10 | Washer10 | 4 | |
| 4 | Q40110 | 垫圈 10 | Washer10 | 4 | |
| 5 | Q/YC198-20 | 螺塞 M20X1.5 | Screw plug M20X1.5 | 2 | |
| 6 | Q/YC149-20 | 复合式密封垫圈 20 | Compound seal washer20 | 2 | 易损件 EWP |
| 7 | E0300-1008102B | 进气接管 | Intake connecting pipe | 1 | |
| 8 | 1530-1008105C | 进气接管垫片 | Intake connecting pipe gasket | 1 | 易损件 EWP |
| 9 | 530-1008104C | 进气管垫片 | Intake pipe gasket | 1 | 易损件 EWP |
| 10 | E0200-1008101A | 进气管 | Intake pipe | 1 | |
| 11 | Q40110 | 垫圈 10 | Washer10 | 14 | |
| 12 | Q40310 | 垫圈 10 | Washer10 | 14 | |
| 13 | Q150B1035 | 螺栓 M10X35 | Bolt M10X35 | 14 | |
| 14 | Q/YC149-10 | 复合式密封垫圈 10 | Compound seal washer 10 | 1 | 易损件 EWP |
| 15 | Q/YC198-10 | 螺塞 M10X1 | Screw plug M10X1 | 1 | |

EWP=Easy wear part (易损件)

9、E1202-1008200/03 排气管部件 Exhaust Pipe Parts

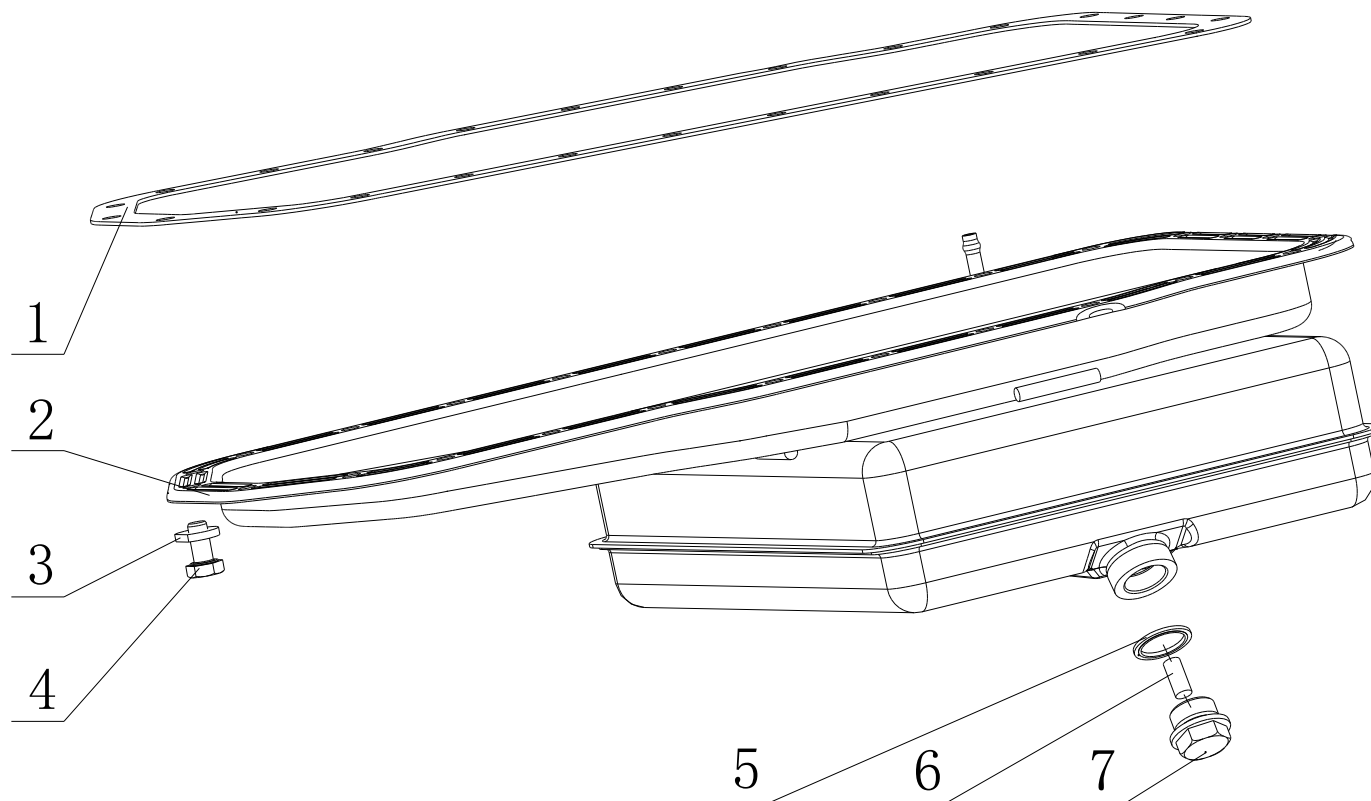


9、E1202-1008200/03 排气管部件 Exhaust Pipe Parts

| 序号 No. | 图 号 Part No. | 名 称 | Part Name | 数量 Qty. | 备 注 Remark |
|--------|----------------|-----------|-------------------------------|---------|------------|
| 1 | 150-1008250 | 排气管垫片组件 | Exhaust pipe gasket component | 4 | |
| 2 | 1575-1008226 | 螺栓套 | Bolt sleeve | 8 | |
| 3 | Q1841065TF2 | 螺栓 M10X65 | Bolt M10X65 | 8 | |
| 4 | E0801-1008204A | 排气管 | Exhaust pipe | 1 | |

EWP=Easy wear part (易损件)

10、E05FA-1009000/03 油底壳总成 Oil Sump Assembly

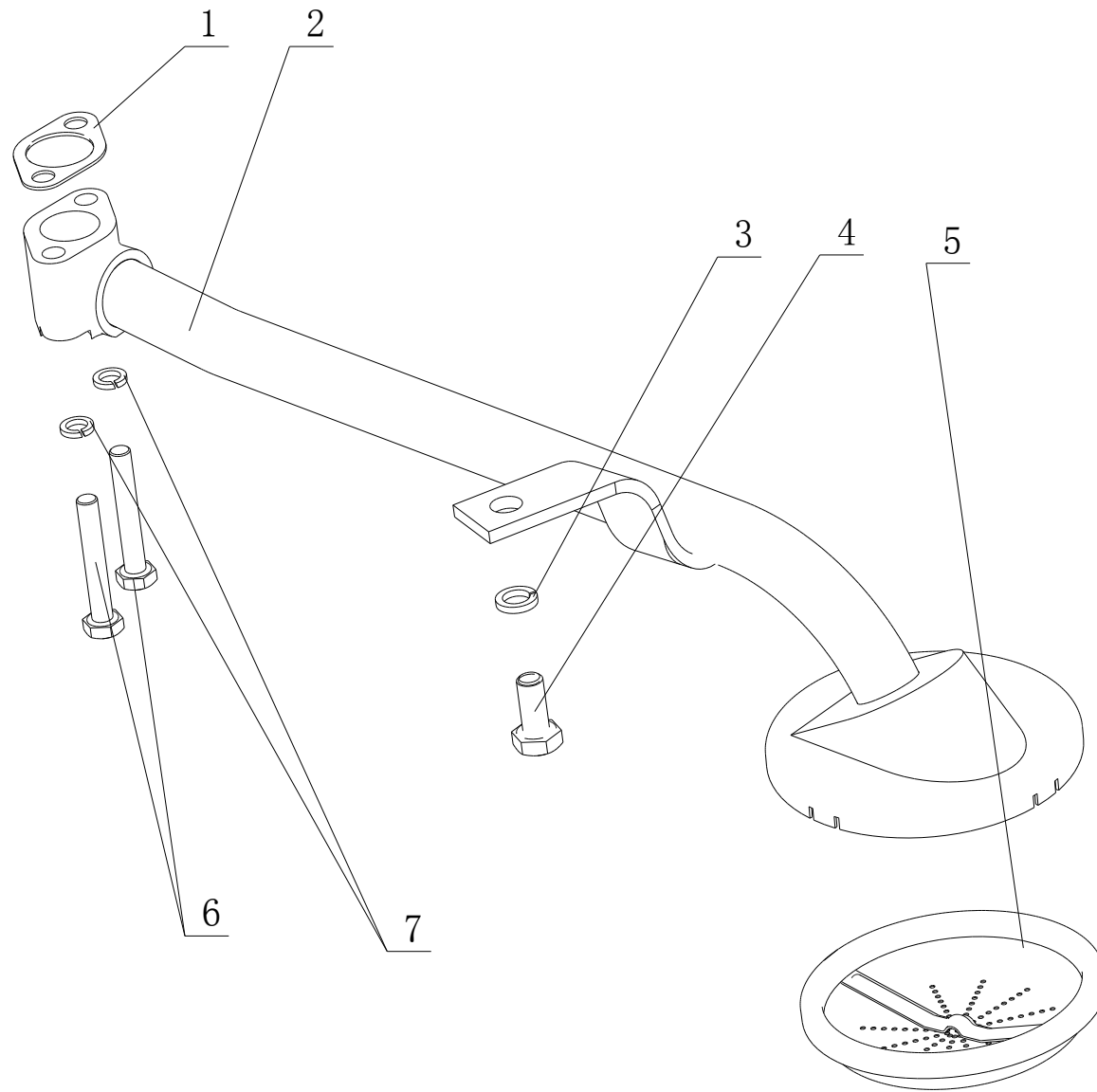


10、E05FA-1009000/03 油底壳总成 Oil Sump Assembly

| 序号 No. | 图 号 Part No. | 名 称 | Part Name | 数量 Qty. | 备 注 Remark |
|--------|----------------|------------|-------------------------|---------|------------|
| 1 | 530-1009011A | 油底壳垫片 | Oil sump gasket | 1 | 易损件 EWP |
| 2 | E05FA-1009040A | 油底壳组件 | Oil Sump Assembly | 1 | |
| 3 | 530-1009002 | 垫圈 | Washer | 26 | |
| 4 | Q1841020 | 螺栓 M10X20 | Bolt M10X20 | 26 | |
| 5 | Q/YC149-27 | 复合式密封垫圈 27 | Compound seal washer 27 | 1 | 易损件 EWP |
| 6 | 6105Q-1009032A | 放油塞磁铁 | Oil drain plug magnet | 1 | |
| 7 | 6105Q-1009031C | 放油塞 | Oil drain plug | 1 | |

EWP=Easy wear part (易损件)

11、530-1010000C/05 机油集滤器 Oil Strainer Assembly

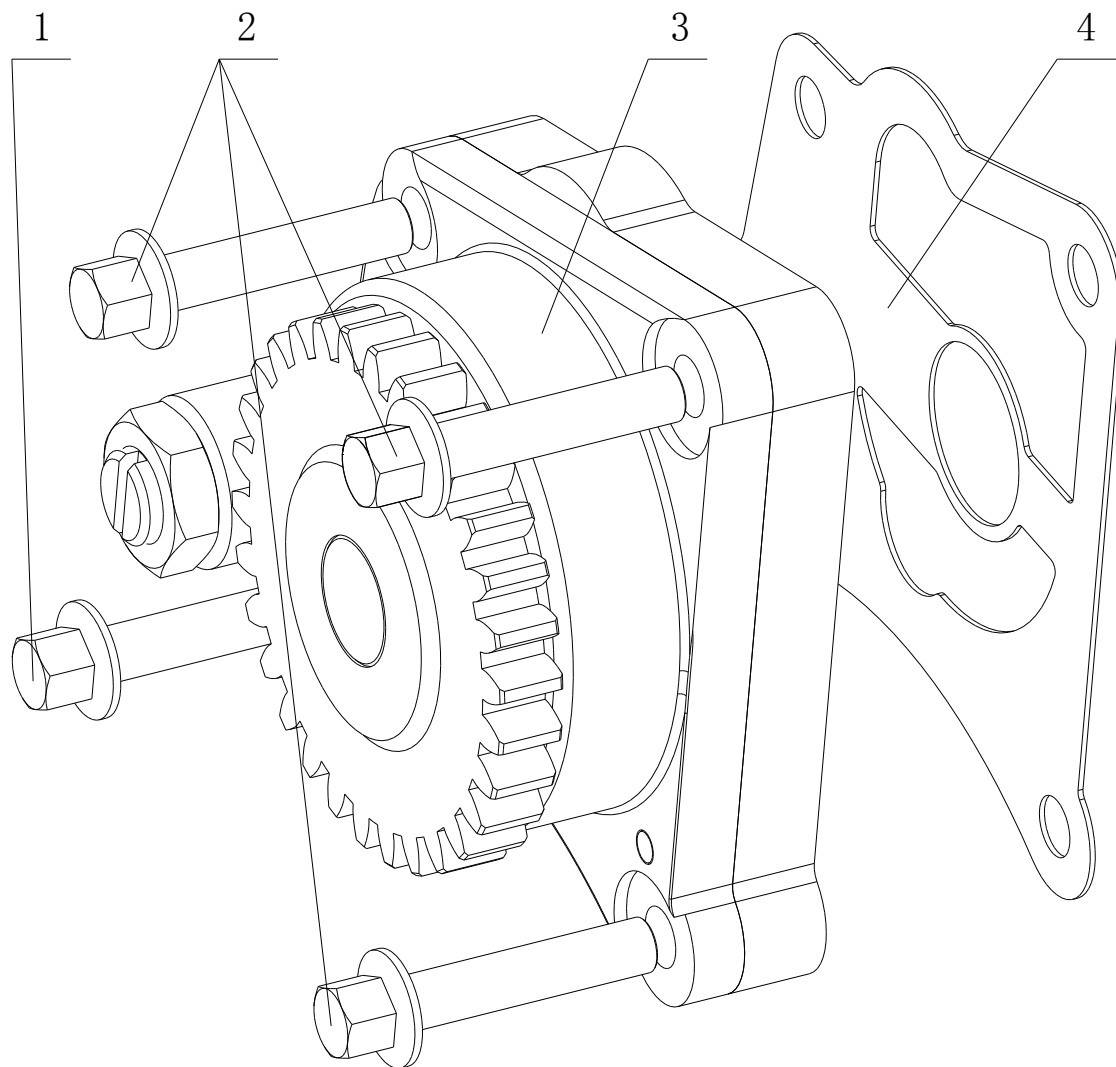


11、530-1010000C/05 机油集滤器 Oil Strainer Assembly

| 序号 No. | 图 号 Part No. | 名 称 | Part Name | 数量 Qty. | 备 注 Remark |
|--------|--------------|-----------|---------------------------|---------|------------|
| 1 | 530-1010050C | 垫片组合件 | Gasket component | 1 | |
| 2 | 530-1010010E | 吸油管焊接件 | Oil suction pipe weldment | 1 | |
| 3 | Q40310 | 垫圈 10 | Washer10 | 1 | |
| 4 | Q150B1022TF2 | 螺栓 M10X22 | Bolt M10X22 | 1 | |
| 5 | 530-1010030 | 滤网组件 | Screen parts | 1 | 易损件 EWP |
| 6 | Q40308 | 垫圈 8 | Washer 8 | 2 | |
| 7 | Q150B0850F2 | 螺栓 M8X50 | Bolt M8X50 | 2 | |

EWP=Easy wear part (易损件)

12、1530-1011000/08 机油泵总成 Oil Pump Assembly

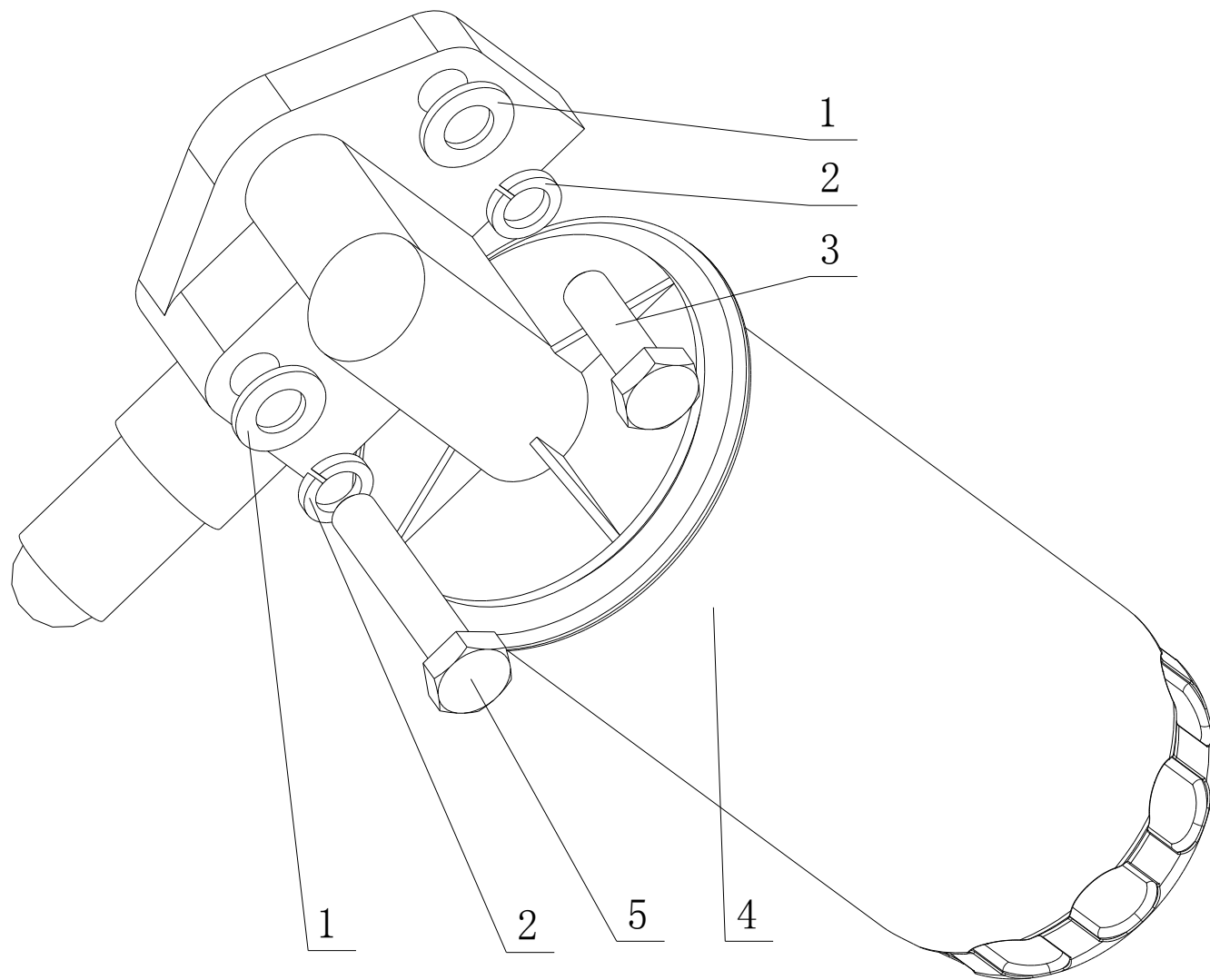


12、1530-1011000/08 机油泵总成 Oil Pump Assembly

| 序号 No. | 图 号 Part No. | 名 称 | Part Name | 数量 Qty. | 备 注 Remark |
|--------|---------------|----------|----------------|---------|------------|
| 1 | Q/YC207-0828 | 螺栓 M8X28 | Bolt M8X28 | 1 | |
| 2 | Q/YC207-0840 | 螺栓 M8X40 | Bolt M8X40 | 3 | |
| 3 | 1530-1011100A | 机油泵部件 | Oil pump parts | 1 | |
| 4 | 530-1011041 | 垫片 | Washer | 1 | 易损件 EWP |

EWP=Easy wear part (易损件)

13、530-1012000/02 机油滤清器部件 Oil Filter Assembly

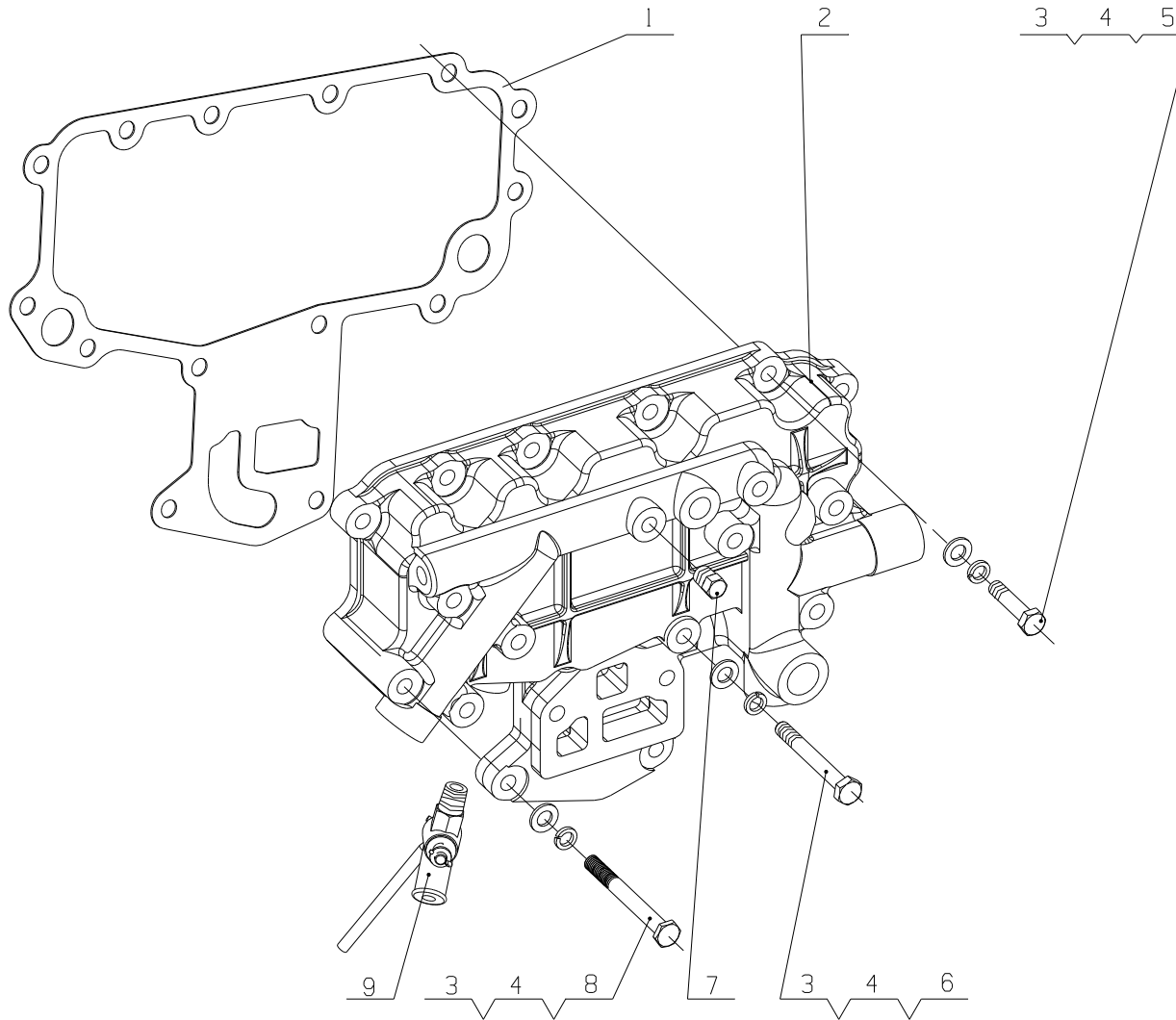


13、530-1012000/02 机油滤清器部件 Oil Filter Assembly

| 序号 No. | 图 号 Part No. | 名 称 | Part Name | 数量 Qty. | 备 注 Remark |
|--------|--------------|-----------|---------------------|---------|------------|
| 1 | Q40110 | 垫圈 10 | Washer 10 | 2 | |
| 2 | Q40310 | 垫圈 10 | Washer 10 | 2 | |
| 3 | Q150B1030 | 螺栓 M10X30 | Bolt M10X30 | 1 | |
| 4 | 530-1012100B | 机油滤清器总成 | Oil filter assembly | 1 | 易损件 EWP |
| 5 | Q150B1050 | 螺栓 M10X50 | Bolt M10X50 | 1 | |

EWP=Easy wear part (易损件)

14、E1202-1013000/04 机油冷却器总成 Oil Cooler Assembly

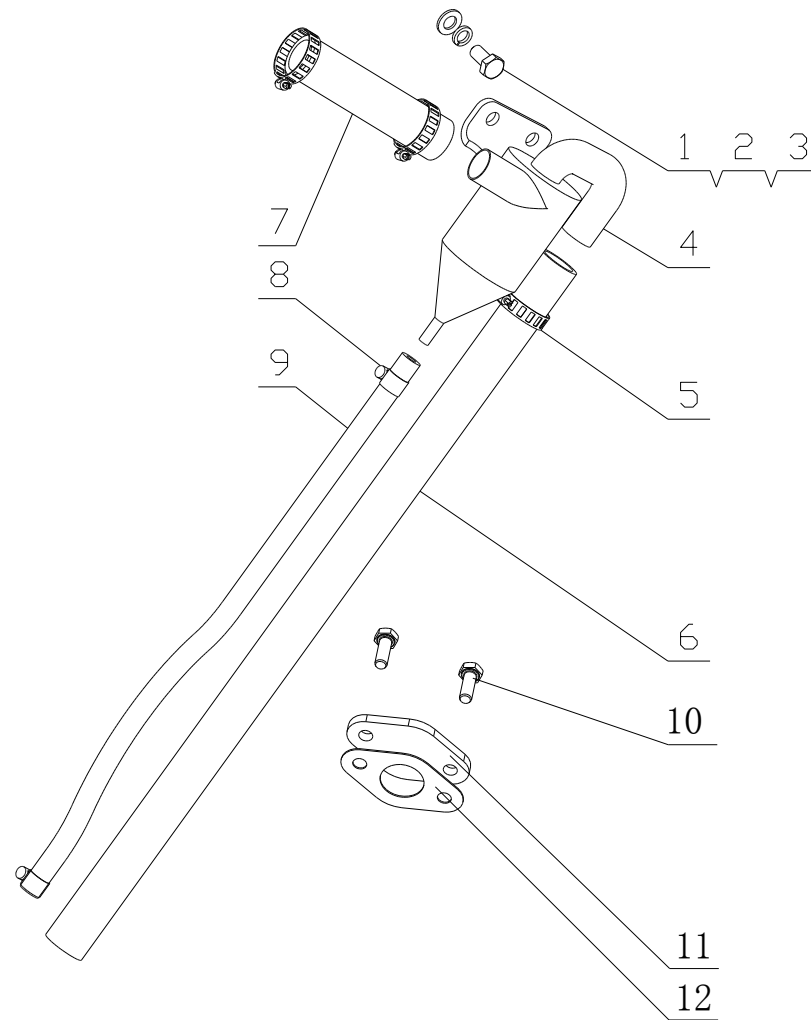


14、E1202-1013000/04 机油冷却器总成 Oil Cooler Assembly

| 序号 No. | 图 号 Part No. | 名 称 | Part Name | 数量 Qty. | 备 注 Remark |
|--------|--------------|-----------|-------------------------|---------|------------|
| 1 | 530-1013012B | 机油冷却器盖垫片 | Oil cooler cover gasket | 1 | 易损件 EWP |
| 2 | 530-1013000C | 机油冷却器总成 | Oil cooler assembly | 1 | |
| 3 | Q40108 | 垫圈 8 | Washer 8 | 14 | |
| 4 | Q40308 | 垫圈 8 | Washer 8 | 14 | |
| 5 | Q150B0832 | 螺栓 M8×32 | Bolt M8×32 | 10 | |
| 6 | Q150B0865 | 螺栓 M8×65 | Bolt M8×65 | 1 | |
| 7 | Q618B01 | 螺塞 NPT1/8 | Screw plug NPT1/8 | 1 | |
| 8 | Q150B0880 | 螺栓 M8×80 | Bolt M8×80 | 3 | |
| 9 | 231-1305000 | 放水开关 | Water drain cocks | 1 | |

EWP=Easy wear part (易损件)

15、E12G1-1014000/13 曲轴箱通风装置总成 Crankcase Ventilation Device Assembly



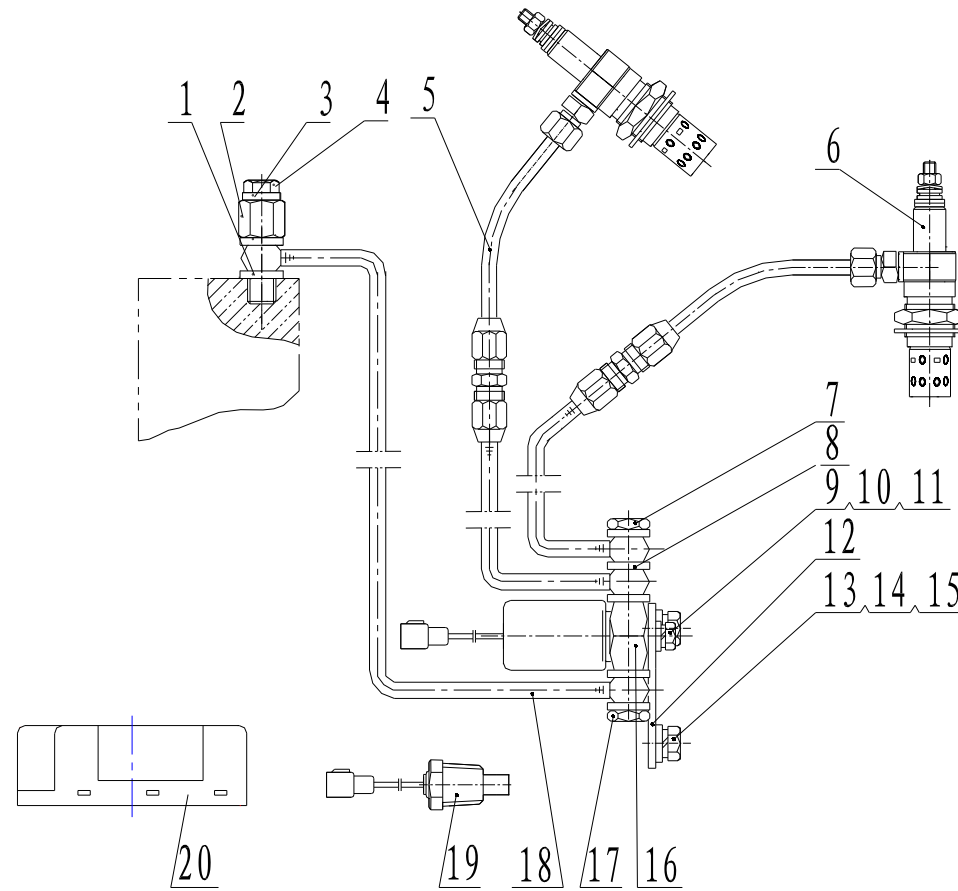
15、E12G1-1014000/13 曲轴箱通风装置总成 Crankcase Ventilation Device Assembly

| 序号 No. | 图 号 Part No. | 名 称 | Part Name | 数量 Qty. | 备 注 Remark |
|--------|----------------|-----------|------------------------------------|---------|------------|
| 1 | Q150B1020 | 螺栓 M10X20 | Bolt M10X20 | 2 | |
| 2 | Q40310 | 垫圈 10 | Washer 10 | 2 | |
| 3 | Q40110 | 垫圈 10 | Washer 10 | 2 | |
| 4 | E0400-1014100 | 离心式油气分离器 | Centrifugal type oil-gas separator | 1 | |
| 5 | Q67638 | 环箍 38 | Loop hoop 38 | 3 | |
| 6 | 1530-1014023A | 通气软管 | Breathing hose | 1 | |
| 7 | E05FA-1014003B | 通气软管 | Breathing hose | 1 | |
| 8 | Q67616 | 环箍 16 | Loop hoop 16 | 2 | |
| 9 | E4000-1014009A | 回油管 | Fuel return pipe | 1 | |
| 10 | Q1840816 | 螺栓 M8X16 | Bolt M8X16 | 2 | |
| 11 | G0100-1014023 | 堵块 | Block | 1 | |
| 12 | 6105Q-1014001A | 呼吸器垫片 | Breather washer | 1 | |

EWP=Easy wear part (易损件)

图 Drawing

16、E12F7-1015000/01 发动机起动辅助装置总成 Engine Start Auxiliary Device Assembly

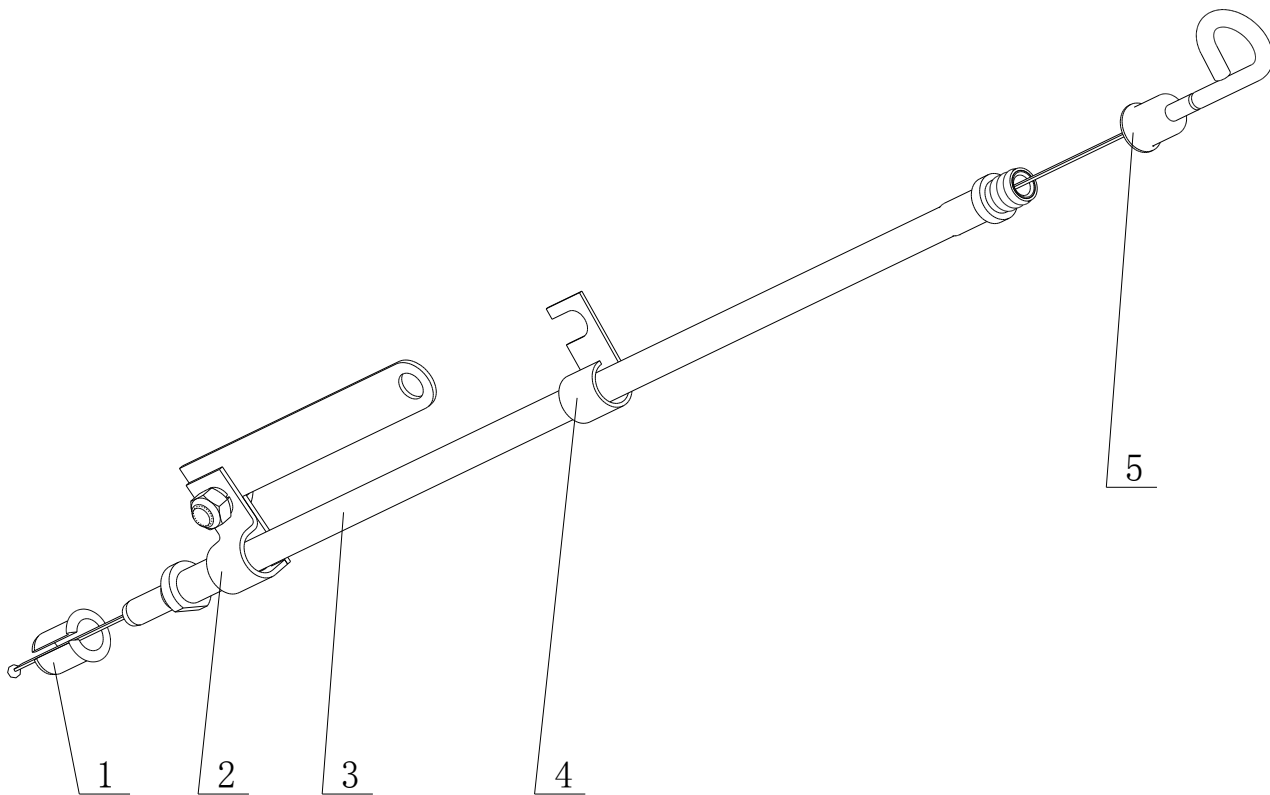


16、E12F7-1015000/01 发动机起动辅助装置总成 Engine Start Auxiliary Device Assembly

| 序号 No. | 图 号 Part No. | 名 称 | Part Name | 数量 Qty. | 备 注 Remark |
|--------|----------------|------------|--|---------|------------|
| 1 | F6000-1008308 | 复合密封圈 | Compound seal washer | 2 | 易损件 EWP |
| 2 | G3208-1008041 | 空心螺栓 I | Hollow bolt | 1 | |
| 3 | Q/YC149-8 | 复合式密封垫圈 8 | Compound seal washer 8 | 1 | 易损件 EWP |
| 4 | Q/YC198-8 | 螺塞 M8X1 | Screw plug | 1 | |
| 5 | G0218-1008301A | 预热塞供油管组件 | Preheating plug fuel supply pipe subassembly | 1 | |
| 6 | G3208-1008043 | 预热塞组件 | Preheating plug subassembly | 2 | |
| 7 | G3208-1008047 | 空心螺栓 II | Hollow bolt | 1 | |
| 8 | Q/YC149-10 | 复合式密封垫圈 10 | Compound seal washer 10 | 5 | 易损件 EWP |
| 9 | Q150B0612 | 螺栓 M6X12 | Bolt | 2 | |
| 10 | Q40306 | 垫圈 6 | Washer | 2 | 易损件 EWP |
| 11 | Q40106 | 垫圈 6 | Washer | 2 | 易损件 EWP |
| 12 | G0211-1008044 | 电磁阀支架 | Electromagnet valve bracket | 1 | |
| 13 | Q150B1016 | 螺栓 M10X16 | Bolt | 2 | |
| 14 | Q40310 | 垫圈 10 | Washer | 2 | 易损件 EWP |
| 15 | Q40110 | 垫圈 10 | Washer | 2 | 易损件 EWP |
| 16 | G3208-1008045 | 电磁阀组件 | Electromagnet valve subassembly | 1 | |
| 17 | G3208-1008048 | 空心螺栓 III | Hollow bolt | 1 | |
| 18 | G0218-1008302 | 电磁阀供油管组件 | Electromagnet valve fuel supply pipe subassembly | 1 | |
| 19 | G3208-1008049 | 水温传感器 | Water temperature sensor | 1 | |
| 20 | G3208-3900011 | 火焰预热电子控制器 | Flame preheat electronic controller | 1 | |

EWP=Easy wear part (易损件)

17、 E1202-1028000/02 油标尺总成 Oil Dipstick Assembly

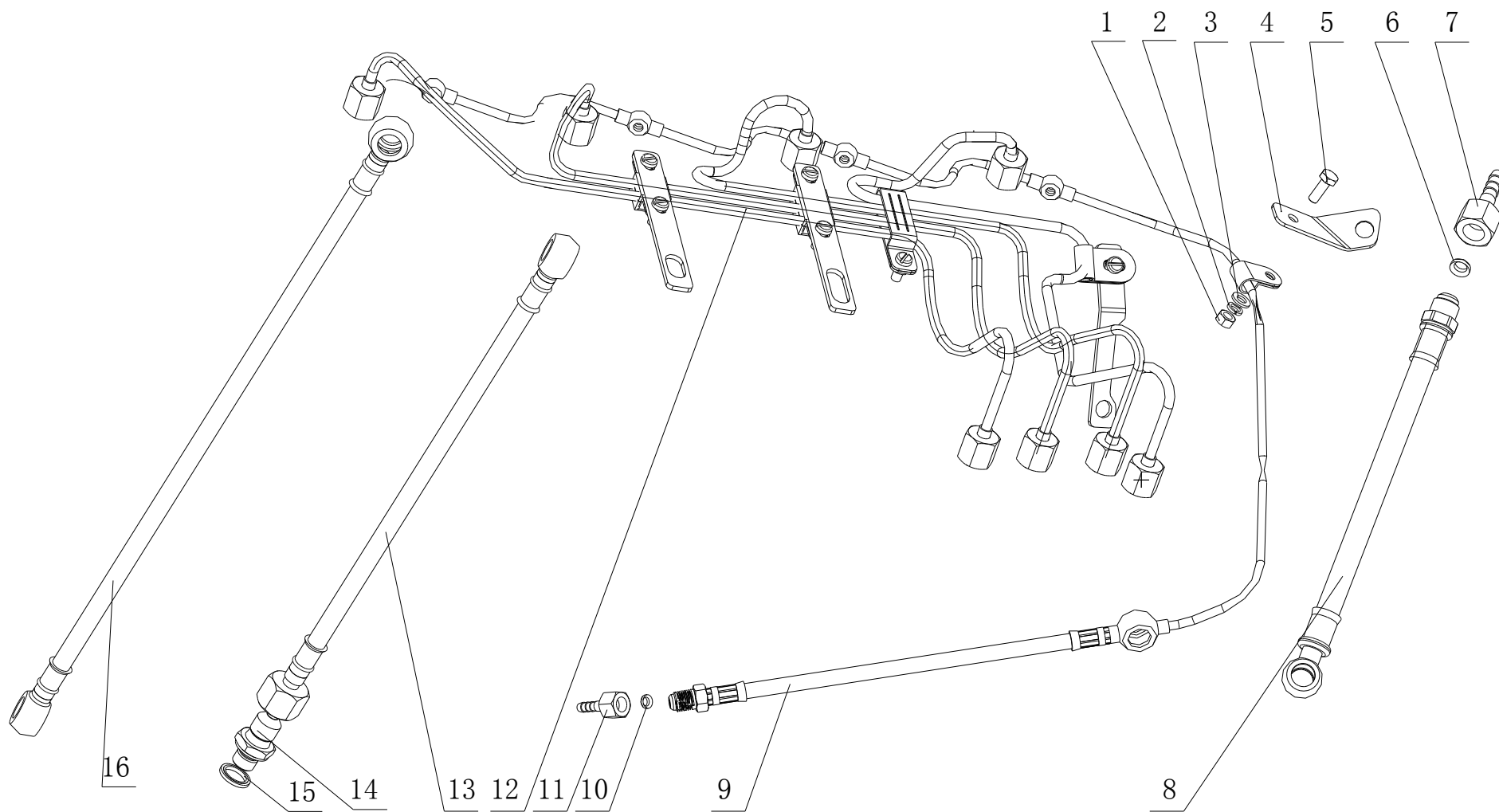


17、E1202-1028000/02 油标尺总成 Oil Dipstick Assembly

| 序号 No. | 图 号 Part No. | 名 称 | Part Name | 数量 Qty. | 备 注 Remark |
|--------|---------------|---------|---------------------------------|---------|------------|
| 1 | E2100-1028161 | 套管 | Sleeve | 1 | 易损件 EWP |
| 2 | 1534-1118360 | 管夹组件 | Pipe clamp Subassembly | 1 | |
| 3 | E2400-1028090 | 油标尺套管组件 | Oil dipstick Sleeve Subassembly | 1 | |
| 4 | 155-1009042A | 管夹 | Pipe clamp | 1 | |
| 5 | 1534-1009050 | 油标尺焊接件 | Oil dipstick weldment | 1 | |

EWP=Easy wear part (易损件)

18、E1297-1104000/01 供给系管路总成 Fuel Supply Pipeline Assembly

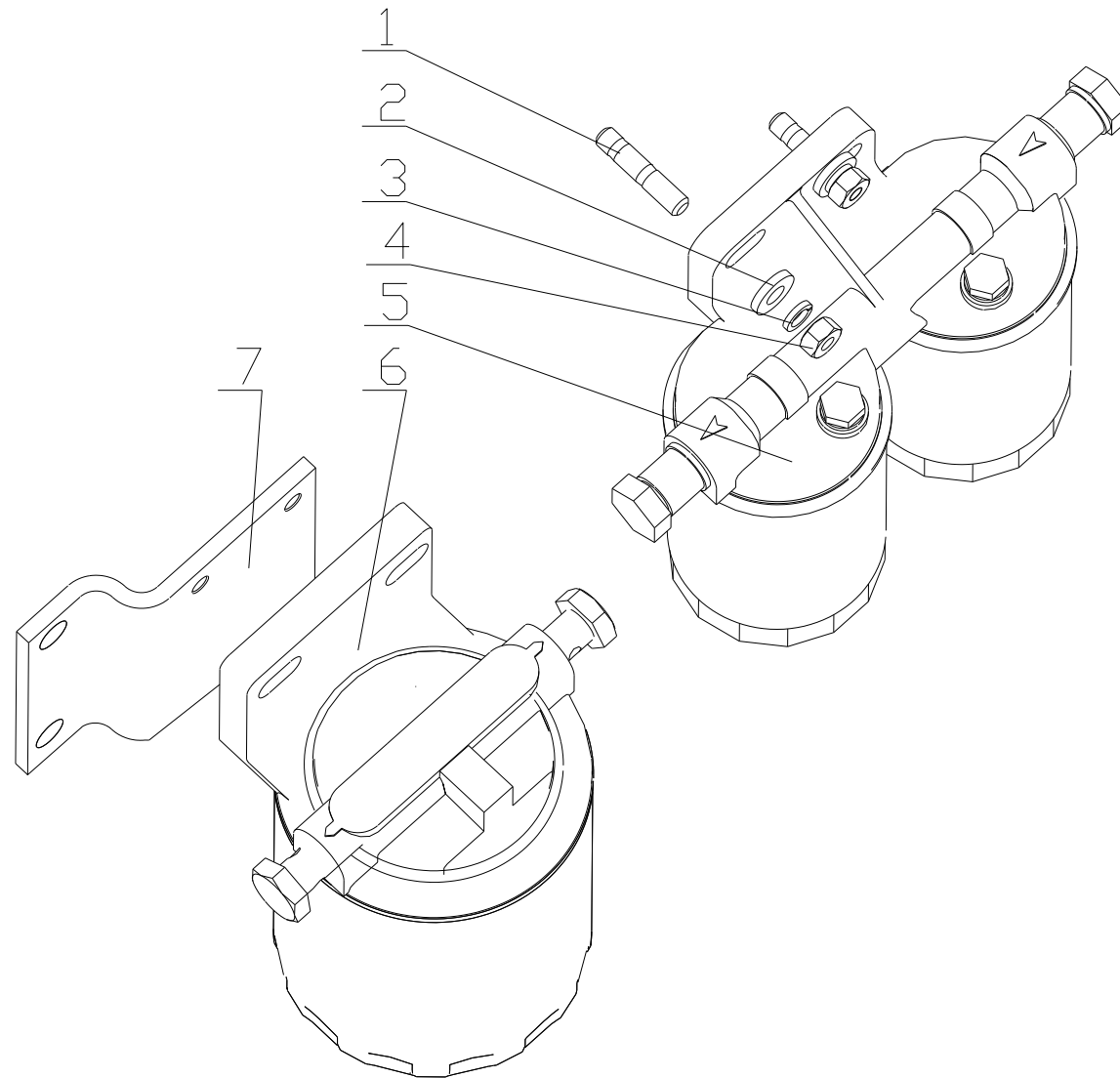


18、E1297-1104000/01 供给系管路总成 Fuel Supply Pipeline Assembly

| 序号 No. | 图 号 Part No. | 名 称 | Part Name | 数量 Qty. | 备 注 Remark |
|--------|----------------|------------|--|---------|------------|
| 1 | Q340B06 | 螺母 M6 | Nut M6 | 1 | |
| 2 | Q40306 | 垫圈 6 | Washer6 | 1 | |
| 3 | Q40106 | 垫圈 6 | Washer6 | 1 | |
| 4 | E0209-1104094 | 固定板 | Mounted plate | 1 | |
| 5 | Q150B0616 | 螺栓 M6X16 | BoltM6X16 | 1 | |
| 6 | G0228-1104206 | 密封圈 | Seal ring | 1 | 易损件 EWP |
| 7 | 362-1104051 | 进油管接头 | Oil inlet pipe joint | 2 | |
| 8 | 6105QJ-1104050 | 进油软管 | Fuel inlet hose | 1 | |
| 9 | E0208-1104040B | 回油管组件 | Fuel return pipe parts | 1 | |
| 10 | A99-1104041 | 密封圈 | Seal ring | 1 | 易损件 EWP |
| 11 | 362-1104041 | 进油管接头 | Oil return pipe joint | 2 | |
| 12 | E0200-1104010 | 高压油管组件 | High pressure fuel pipe parts | 1 | |
| 13 | E1207-1104090 | 柴滤器进油管总成 | Fuel inlet pipe assembly, filter | 1 | |
| 14 | A30-1118021 | 进油软管接头 | Fuel inlet hose joint | 1 | |
| 15 | Q/YC149-14 | 复合式密封垫圈 14 | Compound seal washer 14 | 1 | |
| 16 | E1207-1104100 | 喷油泵进油管总成 | Fuel inlet pipe assembly, injection pump | 1 | |

EWP=Easy wear part (易损件)

19、B8305-1105000/03 柴油滤清器总成 Fuel Filter Assembly

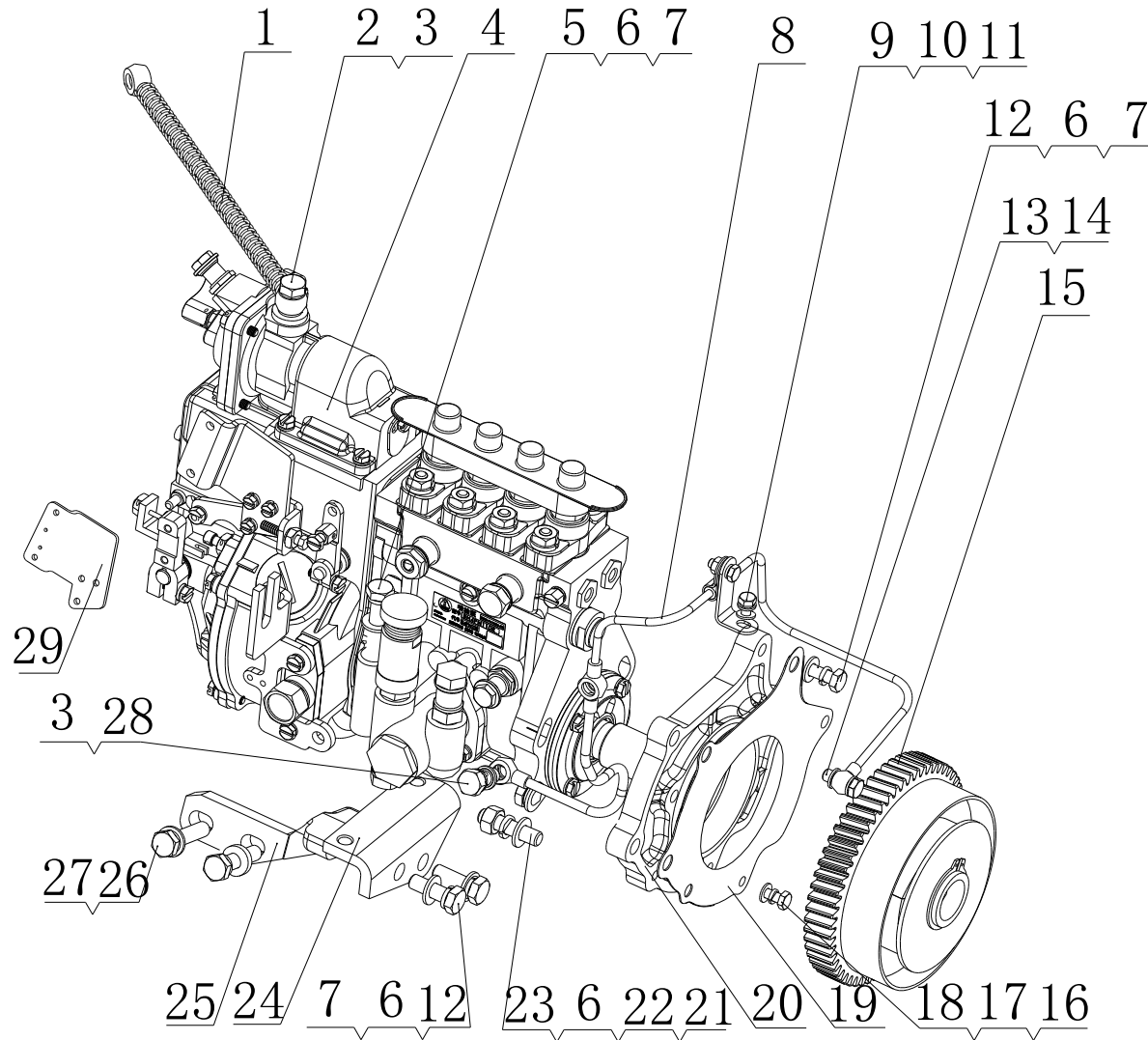


19、B8305-1105000/03 柴油滤清器总成 Fuel Filter Assembly

| 序号 No. | 图 号 Part No. | 名 称 | Part Name | 数量 Qty. | 备 注 Remark |
|--------|----------------|----------|-------------------------|---------|---------------------|
| 1 | Q1200830 | 螺柱 M8X30 | Stud | 2 | |
| 2 | 6105Q-3509013 | 垫圈 | Washer | 2 | |
| 3 | Q40308 | 垫圈 8 | Washer8 | 2 | |
| 4 | Q340B08 | 螺母 M8 | Nut M8 | 2 | |
| 5 | 231-1105010 | 柴油滤清器 | Fuel filter | 1 | 玉柴华原 Yuchai huayuan |
| 6 | B7604-1105200 | 旋装沉淀器 | Rotational precipitator | 1 | |
| 7 | B7604-1105001B | 柴油滤清器座 | Fuel filter seat | 1 | |

EWP=Easy wear part (易损件)

20、E3798-1111000/07 喷油泵总成 Injection Pump Assembly



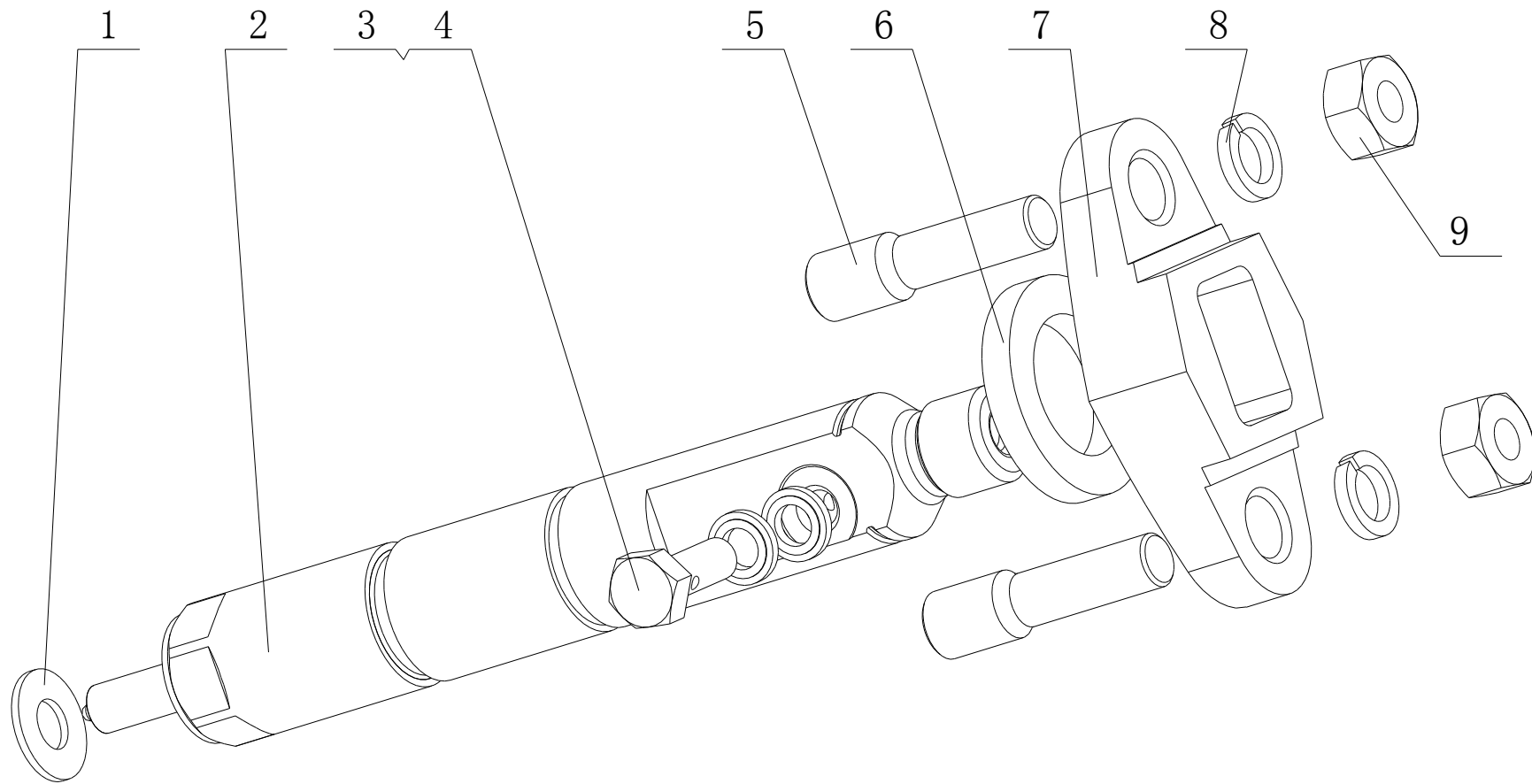
20、E3798-1111000/07 喷油泵总成 Injection Pump Assembly

| 序号 No. | 图 号 Part No. | 名 称 | Part Name | 数量 Qty. | 备 注 Remark |
|--------|--------------------|----------------|--------------------------------|---------|--|
| 1 | E0200-1111070A | 增压补偿管 | Turbocharger compensation pipe | 1 | |
| 2 | Q/YC901-1C1010 | 铰接螺栓 M10X1 | Bolt M10X1 | 1 | |
| 3 | Q/YC149-10 | 复合式密封垫圈 10 | Compound seal washer 10 | 4 | 易损件 EWP |
| 4 | E0400-1111100-493R | 喷油泵 | Injection pump | 1 | 南岳泵, 选装 Nanyue brand, option1 |
| | E0500-1111B-04-179 | 输油泵 | Fuel pump | 1 | 二次配套件, 南岳泵 Secondary matching part, Nanyue brand |
| | E0200-1111090A-179 | 提前器组件 (JQ1301) | Advancer parts | 1 | 二次配套件, 南岳泵 Secondary matching part, Nanyue brand |
| 4 | E0400-1111100-C27R | 喷油泵 | Injection pump | 1 | 龙口泵, 选装 Longkou brand, Optional |
| | E0400-1111140-C27 | 输油泵 | Fuel pump | 1 | 二次配套件, 龙口泵 Secondary matching part |
| | E0400-1111A-21-C27 | 柱塞 | Plunger | 4 | 二次配套件, 龙口泵 Secondary matching part, Longkou brand |
| | E0400-1111A-22-C27 | 出油阀 | Fuel outlet valve | 4 | 二次配套件, 龙口泵 Secondary matching part, Longkou brand |
| | E1200-1111D-01-380 | 提前器总成 (Q617A) | Advancer assembly | 1 | |
| 5 | Q/YC1821080 | 螺栓 M10X80 | Bolt M10X80 | 2 | |

| | | | | | |
|----|----------------|-----------|----------------------------------|----|---------|
| 6 | Q40310 | 垫圈 10 | Washer10 | 13 | |
| 7 | Q40110 | 垫圈 10 | Washer10 | 7 | |
| 8 | E0200-1111040F | 机油管焊接件 | Oil pipe weldment | 1 | |
| 9 | Q150B0612 | 螺栓 M6X12 | Bolt M6X12 | 1 | |
| 10 | Q40306 | 垫圈 6 | Washer 6 | 1 | |
| 11 | Q40106 | 垫圈 6 | Washer 6 | 1 | |
| 12 | Q150B1030 | 螺栓 M10X30 | Bolt M10X30 | 4 | |
| 13 | 6105Q-1007073 | 接头螺栓 | Joint bolt | 1 | |
| 14 | Q/YC149-8 | 复合式密封垫圈 8 | Compound seal washer 8 | 2 | 易损件 EWP |
| 15 | E2000-1111700A | 提前器部件 | Advancer parts | 1 | |
| 16 | Q40108 | 垫圈 8 | Washer 8 | 2 | |
| 17 | Q40308 | 垫圈 8 | Washer 8 | 2 | |
| 18 | Q150B0818TF2 | 螺栓 M8X18 | Bolt M8X18 | 2 | |
| 19 | 2530-1111062B | 连接板垫片 | Connecting plate gasket | 1 | 易损件 EWP |
| 20 | 2530-1111061B | 喷油泵连接板 | connecting plate, injection pump | 1 | |
| 21 | Q1201032 | 螺柱 M10X32 | Bolt M10X32 | 4 | |
| 22 | A30-1111128 | 锁紧块垫圈 | Locking block washer | 4 | |
| 23 | Q340B10 | 螺母 M10 | Bolt M10 | 4 | |
| 24 | E0200-1111011 | 支架 | Bracket | 1 | |
| 25 | E0300-1111112 | 托架 | Support | 1 | |
| 26 | Q1841040 | 螺栓 M10X40 | Bolt M10X40 | 2 | |
| 27 | E0200-1111015 | 垫圈 | Washer | 2 | |
| 28 | 150-3509023 | 进油螺栓 | Fuel inlet bolt | 1 | |
| 29 | E12D9-1111201 | 支架 | Bracket | 1 | |

EWP=Easy wear part (易损件)

21、E0800-1112000/03 喷油器总成 **Injector Assembly**

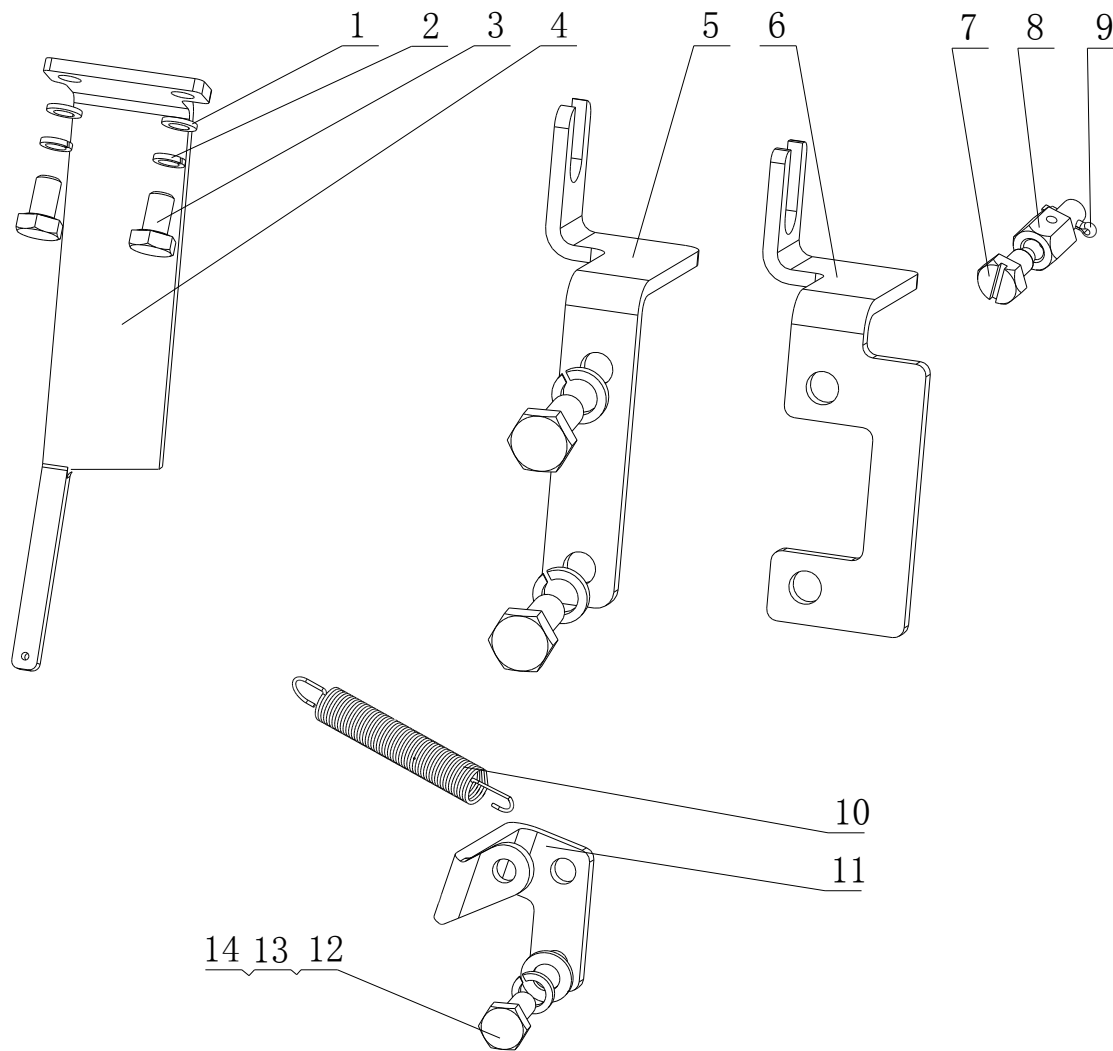


21、E0800-1112000/03 喷油器总成 Injector Assembly

| 序号 No. | 图 号 Part No. | 名 称 | Part Name | 数量 Qty. | 备 注 Remark |
|--------|----------------|-----------|------------------------|---------|-------------------------------|
| 1 | 150-1112001 | 喷油器垫片 | Injector washer | 4 | 易损件 EWP |
| 2 | E0800-1112020C | 喷油器 | Fuel injector | 4 | 北油, 选装 Beiyou brand, Optional |
| | E0800-1112050C | 油嘴偶件 | Nozzle matching parts | 4 | |
| 3 | 150-1112012A | 螺栓 | Bolt | 4 | |
| 4 | Q/YC149-6 | 复合式密封垫圈 6 | Compound seal washer 6 | 8 | 易损件 EWP |
| 5 | 530-1112021B | 喷油器螺柱 | Injector bolt | 8 | |
| 6 | 150-1112015 | 密封垫 | Seal washer | 4 | |
| 7 | 150-1112014 | 固定板 | Locking plate | 4 | |
| 8 | Q40308 | 垫圈 8 | Washer 8 | 8 | |
| 9 | Q360B08 | 螺母 M8 | Nut M8 | 8 | |

EWP=Easy wear part (易损件)

22、E1297-1130000/01 燃油喷射泵附件总成 Fuel Injection Pump Accessory Assembly

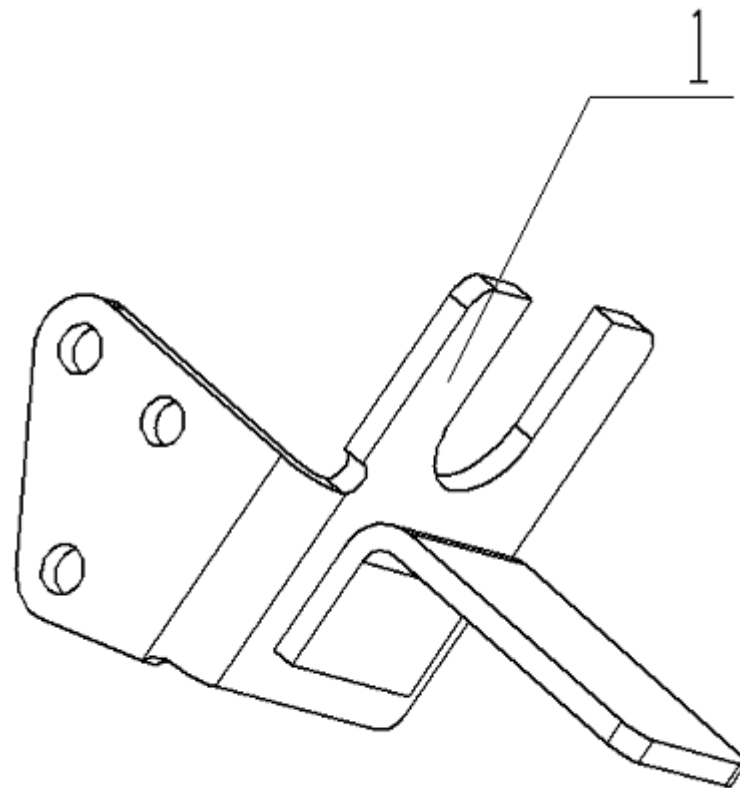


22、E1297-1130000/01 燃油喷射泵泵附件总成 Fuel Injection Pump Accessory Assembly

| 序号 No. | 图 号 Part No. | 名 称 | Part Name | 数量 Qty. | 备 注 Remark |
|--------|---------------|----------|-------------------------|---------|--|
| 1 | Q40108 | 垫圈 8 | Washer 8 | 2 | |
| 2 | Q40308 | 垫圈 8 | Washer 8 | 4 | |
| 3 | Q150B0816 | 螺栓 M8X16 | Bolt M8X16 | 4 | |
| 4 | E36F3-1111015 | 油门开关支架 | Throttle switch bracket | 1 | |
| 5 | E1202-1111013 | 油门拉线支架 | Throttle cable bracket | 1 | 喷油泵无正时窗时装 Installed when there is no timing window |
| 6 | E1102-1111014 | 油门拉线支架 | Throttle cable bracket | 1 | 喷油泵有正时窗时装 Installed when there is timing window |
| 7 | D0110-1111017 | 螺栓 M6×10 | Bolt M6×10 | 1 | |
| 8 | D0110-1111018 | 接线座 | Wire holder | 1 | |
| 9 | Q5001610 | 销 1.6X10 | Pin 1.6X10 | 1 | |
| 10 | 6QA1-1119005 | 拉簧 | Draw spring | 1 | |
| 11 | E0401-1111013 | 油门手柄 | Throttle handle | 1 | |
| 12 | Q40106 | 垫圈 6 | Washer 6 | 2 | |
| 13 | Q40306 | 垫圈 6 | Washer 6 | 2 | |
| 14 | Q150B0614 | 螺栓 M6X14 | Bolt M6X14 | 2 | |

EWP=Easy wear part (易损件)

23、E12F5-1115000/01 断油机构总成 Fuel Lock-off System Assembly

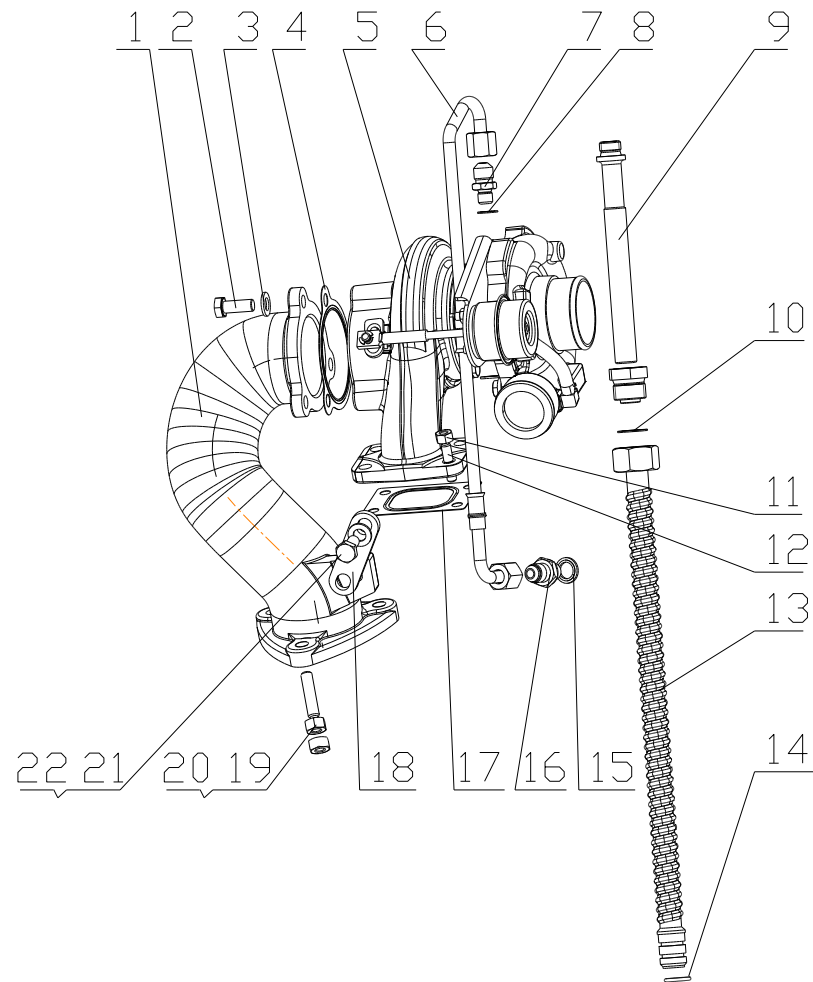


23、E12F5-1115000/01 断油机构总成 Fuel Lock-off System Assembly

| 序号 No. | 图 号 Part No. | 名 称 | Part Name | 数量 Qty. | 备 注 Remark |
|--------|---------------|-----|-----------|---------|------------|
| 1 | E04F2-1115002 | 支架 | Bracket | 1 | |

EWP=Easy wear part (易损件)

24、E3798-1118000/03 增压器总成 Turbocharger Assembly

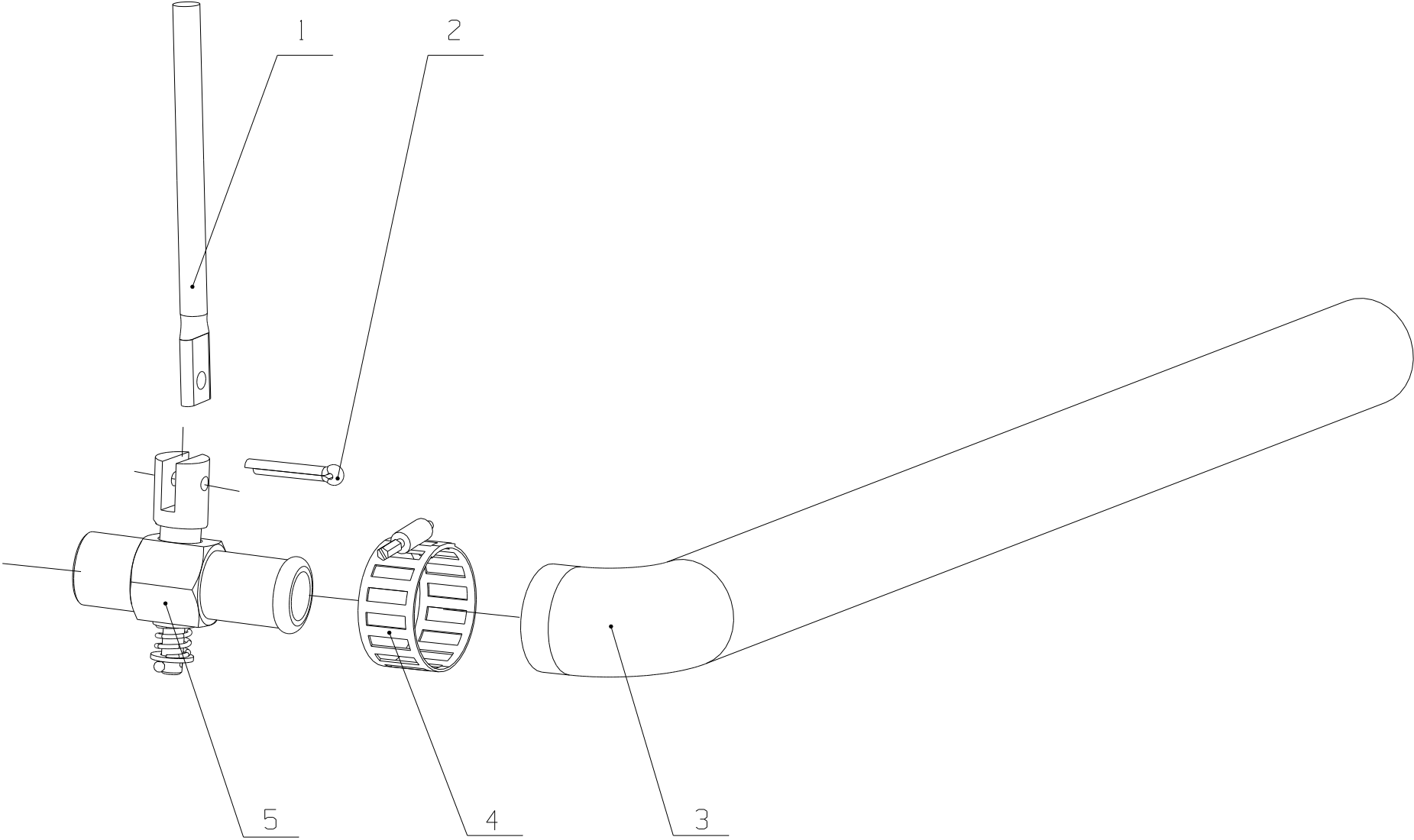


24、E3798-1118000/03 增压器总成 Turbocharger Assembly

| 序号 No. | 图 号 Part No. | 名 称 | Part Name | 数量 Qty. | 备 注 Remark |
|--------|--------------------|--------------|--------------------------------------|---------|--------------|
| 1 | E04F6-1008203A | 涡轮后排气接管 | Turbine rear exhaust connecting pipe | 1 | |
| 2 | Q150B1025TF2 | 螺栓 M10X25 | Bolt M10X25 | 3 | |
| 3 | Q40110 | 垫圈 10 | Washer10 | 3 | |
| 4 | E0803-1118003 | 涡轮出口垫片 | Turbine outlet washer | 1 | |
| 5 | E0401-1118100-135R | 增压器 | Turbocharger | 1 | 选装件 optional |
| | E0401-1118100A | 增压器 | Turbocharger | 1 | 选装件 optional |
| 6 | E12F6-1118240B | 进油管焊接组件 | Fuel inlet pipe weldment groupware | 1 | |
| 7 | E0200-1118031A | 增压器进油管接头 | Turbocharger fuel inlet pipe joint | 1 | |
| 8 | Q/YC901-3C12 | 垫圈 12 | Washer 12 | 1 | |
| 9 | E0800-1118055D | 增压器回油接头 | Turbocharger fuel return joint | 1 | |
| 10 | Q/YC901-3C18 | 垫圈 18 | Washer18 | 1 | |
| 11 | E0200-1118013 | 螺母 M8×1 | Nut M8×1 | 4 | |
| 12 | E0800-1118011 | 双头螺柱 | Threaded stud | 4 | |
| 13 | 1575-1118340 | 增压器回油管 | Fuel return pipe | 1 | |
| 14 | YC208-B01700F | O 形圈 2.65X17 | O-ring 2.65X17 | 2 | |
| 15 | Q/YC149-14 | 复合式密封垫圈 14 | Compound seal washer 14 | 1 | |
| 16 | A30-1118021 | 进油软管接头 | Fuel inlet hose joint | 1 | |
| 17 | 1530-1118012 | 增压器垫片 | Turbocharger gasket | 1 | |
| 18 | 1575-1118075 | 支架 | Bracket | 1 | |
| 19 | Q1201250TF2 | 螺栓 M12X50 | Bolt M12X50 | 3 | |
| 20 | GB/T6170-12-A1-50 | 不锈钢螺母 M12 | Stainless steel Nut M12 | 6 | |
| 21 | Q150B1022TF2 | 螺栓 M10X22 | Bolt M10X22 | 2 | |
| 22 | Q40110 | 垫圈 10 | Washer10 | 2 | |

EWP=Easy wear part (易损件)

25、E3299-1305000/02 放水阀总成 Water Drain Valve Assembly

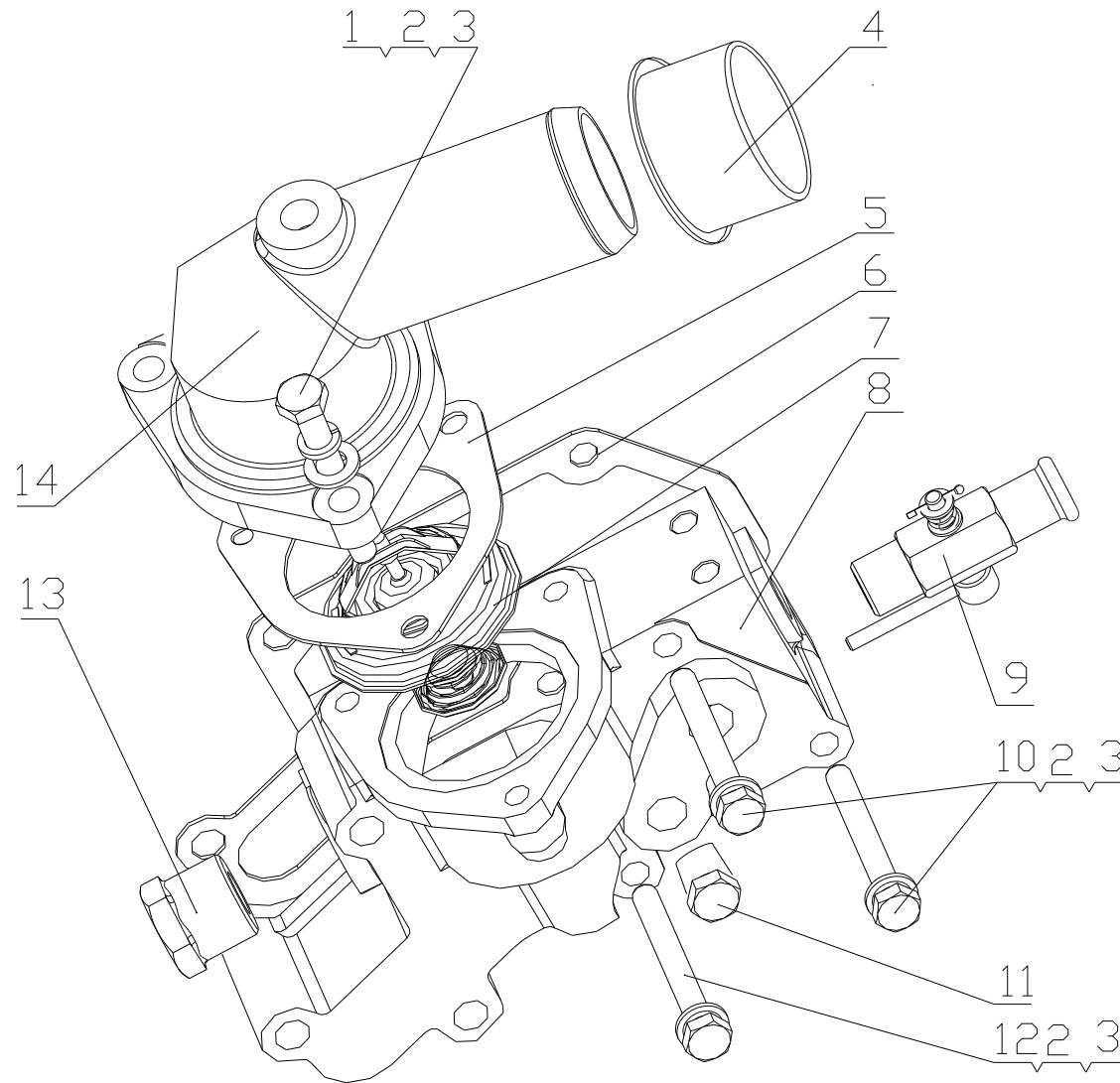


25、E3299-1305000/02 放水阀总成 Water Drain Valve Assembly

| 序号 No. | 图 号 Part No. | 名 称 | Part Name | 数量 Qty. | 备 注 Remark |
|--------|--------------|----------|-------------------------|---------|------------|
| 1 | 150-1305015 | 操纵杆 | Steering handle | 1 | |
| 2 | Q5003218 | 销 3.2X18 | Pin 3.2X18 | 1 | |
| 3 | 530-1305002A | 弯胶管 | kneed hose | 1 | |
| 4 | Q67627 | 环箍 27 | Hoop 27 | 1 | |
| 5 | 530-1305010C | 放水阀部件 | Water drain valve parts | 1 | |

EWP=Easy wear part (易损件)

26、E02F6-1306000/07 调温器总成 Thermostat Assembly

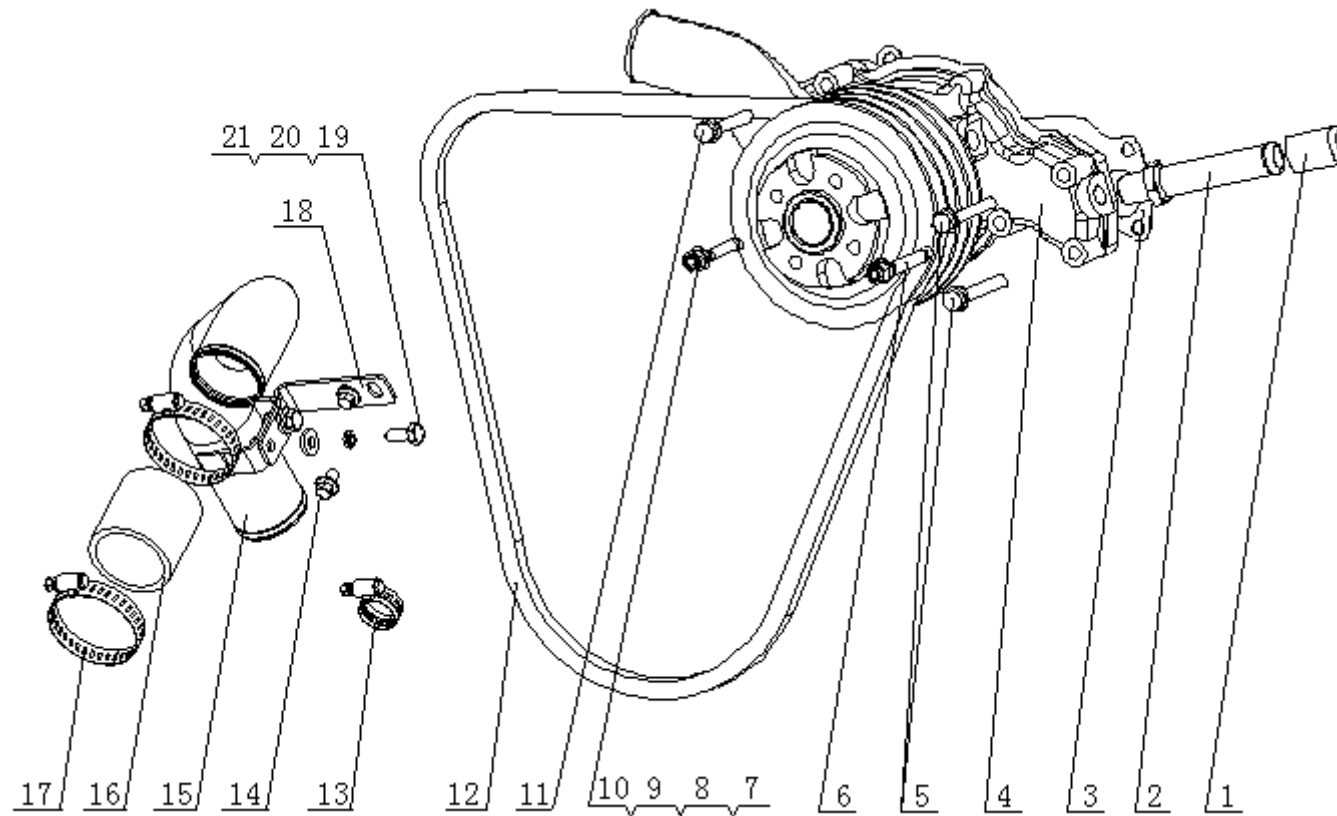


26、E02F6-1306000/07 调温器总成 Thermostat Assembly

| 序号 No. | 图 号 Part No. | 名 称 | Part Name | 数量 Qty. | 备 注 Remark |
|--------|---------------|------------|--------------------------------------|---------|------------|
| 1 | Q150B0830 | 螺栓 M8X30 | Bolt M8X30 | 3 | |
| 2 | Q40308 | 垫圈 8 | Washer8 | 6 | |
| 3 | Q40108 | 垫圈 8 | Washer8 | 6 | |
| 4 | YC4-44 | 胶盖 44 | Rubber cover 44 | 1 | |
| 5 | 530-1306013 | 节温器盖垫片 | Thermostat cover washer | 1 | 易损件 EWP |
| 6 | 530-1306014 | 节温器座垫片 | Thermostat seat washer | 1 | 易损件 EWP |
| 7 | 530-1306010B | 蜡式调温器 | Thermostat | 1 | |
| 8 | E02F6-1306003 | 调温器座 | Thermostat seat | 1 | |
| 9 | 6105Q-1305100 | 温风进水阀总成 | Warm air- water inlet valve assembly | 1 | |
| 10 | Q150B0860 | 螺栓 M8X60 | Bolt M8X60 | 2 | |
| 11 | Q150B0865 | 螺栓 M8X65 | Bolt M8X65 | 1 | |
| 12 | Q618B03 | 螺塞 NPT 3/8 | Screw plug NPT 3/8 | 1 | |
| 13 | Q618B02 | 螺塞 NPT 1/4 | Screw plug NPT 1/4 | 1 | |
| 14 | E0208-1306012 | 节温器盖 | Thermostat cover | 1 | |

EWP=Easy wear part (易损件)

27、E13F2-1307000/04 水泵总成 Water Pump Assembly

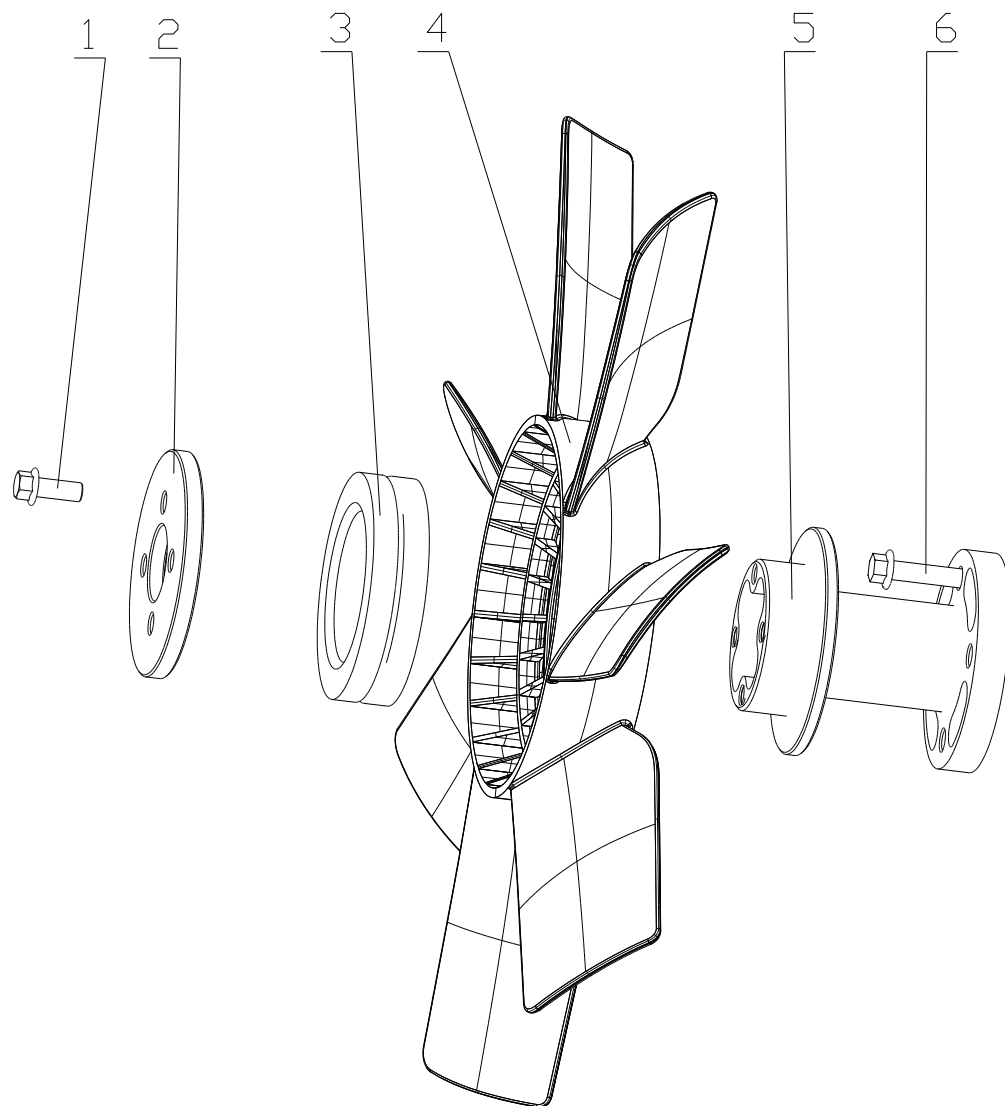


27、E13F2-1307000/04 水泵总成 Water Pump Assembly

| 序号 No. | 图 号 Part No. | 名 称 | Part Name | 数量 Qty. | 备 注 Remark |
|--------|----------------|--------------|-----------------------------------|---------|------------|
| 1 | 531A-1307015 | 暖风回水接头盖 | Warm air-water return joint cover | 1 | |
| 2 | 530-1307032 | 暖风回水接头 | Warm air-water return joint | 1 | |
| 3 | 1530-1307029 | 水泵盖板垫片 | Water pump cover plate gasket | 1 | 易损件 EWP |
| 4 | 1584-1307020G | 水泵 | Water pump | 1 | |
| 5 | Q150B0870TF2 | 螺栓 M8X70 | Bolt M8X70 | 2 | |
| 6 | Q1200870TF2 | 螺柱 M8X70 | Bolt M8X70 | 1 | |
| 7 | Q1200860TF2 | 螺柱 M8X60 | Bolt M8X60 | 1 | |
| 8 | Q40108 | 垫圈 8 | Washer8 | 5 | |
| 9 | Q40308 | 垫圈 8 | Washer8 | 5 | |
| 10 | Q360B08 | 螺母 M8 | Nut M8 | 2 | |
| 11 | Q150B0860TF2 | 螺栓 M8X60 | Bolt M8×60 | 1 | |
| 12 | 1531-1307050A | 水泵皮带 SPA1100 | Water pump belt | 2 | 易损件 EWP |
| 13 | Q67627 | 环箍 27 | Loop hoop | 1 | |
| 14 | Q1840812 | 螺栓 M8X12 | Bolt | 2 | |
| 15 | E1101-1307250A | 水泵进水管组件 | Water inlet pump subassembly | 1 | |
| 16 | 231-1307016 | 进水软管 | Water inlet hose | 1 | |
| 17 | Q67664 | 环箍 64 | Loop hoop | 2 | |
| 18 | E1101-1307241C | 支架 | Bracket | 1 | |
| 19 | Q150B0820 | 螺栓 M8X20 | Bolt | 2 | |
| 20 | Q40308 | 垫圈 8 | Washer8 | 2 | |
| 21 | 6105Q-3509013 | 垫圈 | Washer | 2 | |

EWP=Easy wear part (易损件)

28、E32S1-1308000/02 风扇总成 Fan Assembly

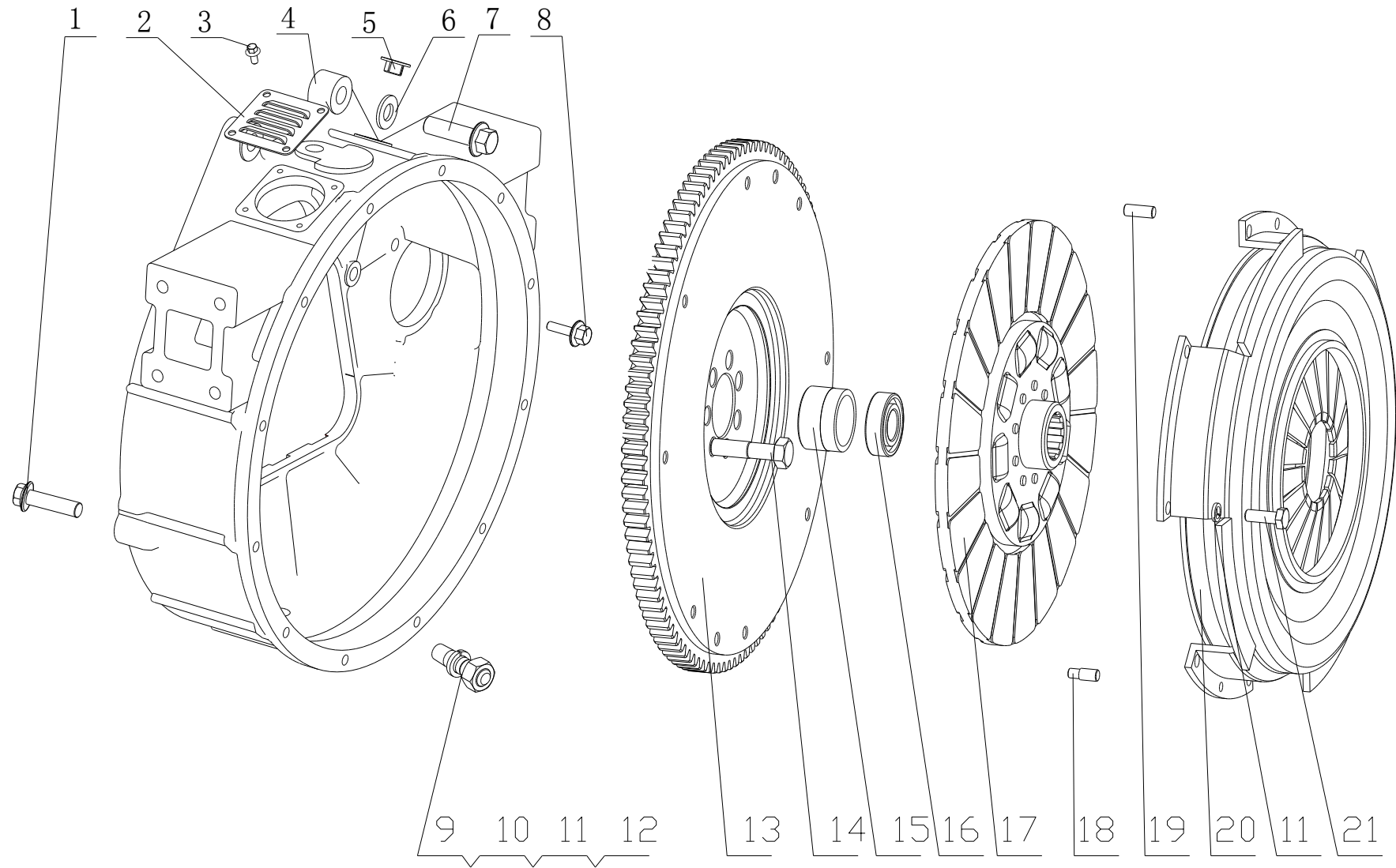


28、E32S1-1308000/02 风扇总成 Fan Assembly

| 序号 No. | 图 号 Part No. | 名 称 | Part Name | 数量 Qty. | 备 注 Remark |
|--------|---------------|-----------|----------------------------|---------|------------|
| 1 | Q1841025TF2 | 螺栓 M10×25 | Bolt M10×25 | 4 | |
| 2 | 365C-1005105 | 压盘 | Pressure plate | 1 | |
| 3 | B3269-1308203 | 阻尼橡胶圈 | Resistance rubber ring | 1 | |
| 4 | E08L1-1308150 | 风扇组件 | Fan subassembly | 1 | |
| 5 | E05FX-1308205 | 风扇减振轴 | Fan vibration damper shaft | 1 | |
| 6 | Q1841055TF2 | 螺栓 M10X55 | Bolt | 4 | |

EWP=Easy wear part (易损件)

29、E3617-160000/02 动力输出总成 Power Output Assembly

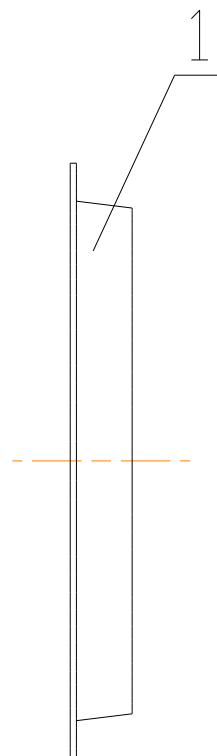


29、E3617-1600000/02 动力输出总成 Power Output Assembly

| 序号 No. | 图 号 Part No. | 名 称 | Part Name | 数量 Qty. | 备 注 Remark |
|--------|------------------|-----------|---------------------------------------|---------|------------|
| 1 | Q1841660TF2 | 螺栓 M16X60 | Bolt M16X60 | 2 | |
| 2 | B3000-1600021 | 盖板 | Cover plate | 1 | |
| 3 | Q1840612 | 螺栓 M6X12 | Bolt M6X12 | 4 | |
| 4 | E0300-1600401A | 飞轮壳 | Flywheel case | 1 | |
| 5 | L3800-1600411 | 堵塞 | Plug | 2 | |
| 6 | G0100-1600412 | 垫圈 | Washer | 2 | |
| 7 | Q1841650TF2 | 螺栓 M16X50 | Bolt M16X50 | 2 | |
| 8 | Q1841230TF2 | 螺栓 M12X30 | Bolt M12X30 | 2 | |
| 9 | Q1201040 | 螺栓 M10X40 | Bolt M10X40 | 12 | |
| 10 | Q40110 | 垫圈 10 | Washer10 | 12 | |
| 11 | Q40310 | 垫圈 10 | Washer10 | 18 | |
| 12 | Q340B10 | 螺母 M10 | Nut M10 | 12 | |
| 13 | E0301-1005360 | 飞轮及齿圈组件 | Flywheel and gear assembly | 1 | |
| 14 | B30-1005064 | 飞轮螺栓 | Flywheel bolt | 7 | |
| 15 | E0301-1005065 | 轴承衬垫 | Bearing liner | 1 | |
| 16 | GB/T276-6205-2RS | 深沟球轴承 | Deep groove ball bearing | 1 | |
| 17 | 370E-1600200 | 离合器从动盘组件 | Clutch and drive plate assembly | 1 | |
| 18 | 330-1600033 | 定位销 | Locating pin | 1 | |
| 19 | 330-1600032 | 定位销 | Locating pin | 1 | |
| 20 | 370E-1600031 | 离合器盖及压盘部件 | Clutch cover and pressure plate parts | 1 | |
| 21 | Q150B1028TF2 | 螺栓 M10X28 | Bolt M10X28 | 8 | |

EWP=Easy wear part (易损件)

30、J41F1-3407000/01 转向泵总成 **Steering Pump Assembly**

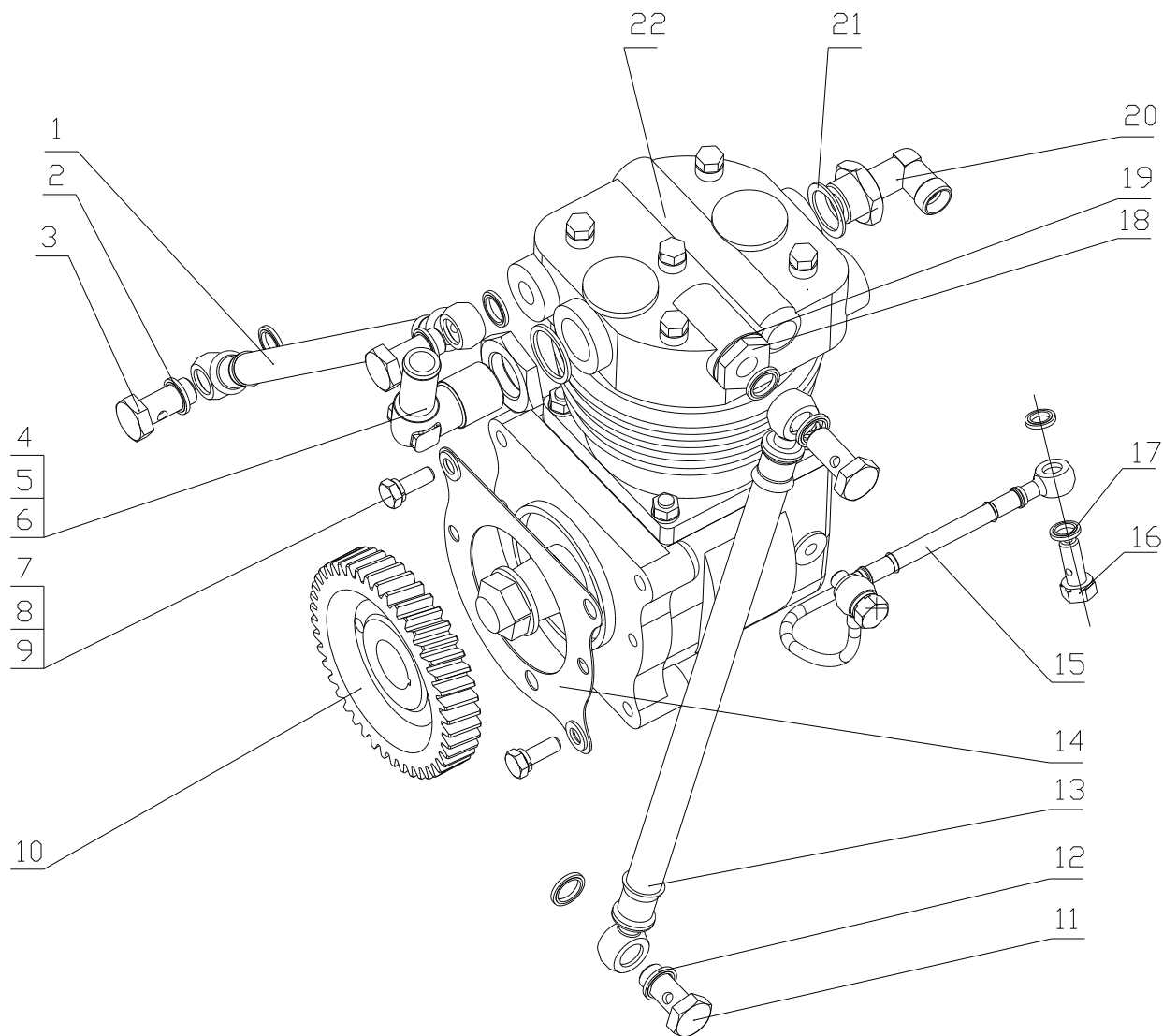


30、J41F1-3407000/01 转向泵总成 Steering Pump Assembly

| 序号 No. | 图号 Part No. | 名称 | Part Name | 数量 Qty. | 备注 Remark |
|--------|-------------|---------|---------------|---------|-----------|
| 1 | YC9-082 | 塑料堵盖 82 | Plastic cover | 1 | |

EWP=Easy wear part (易损件)

31、E0208-3509000/12 气动制空气压缩机总成 Pneumatic Air Compressor Assembly

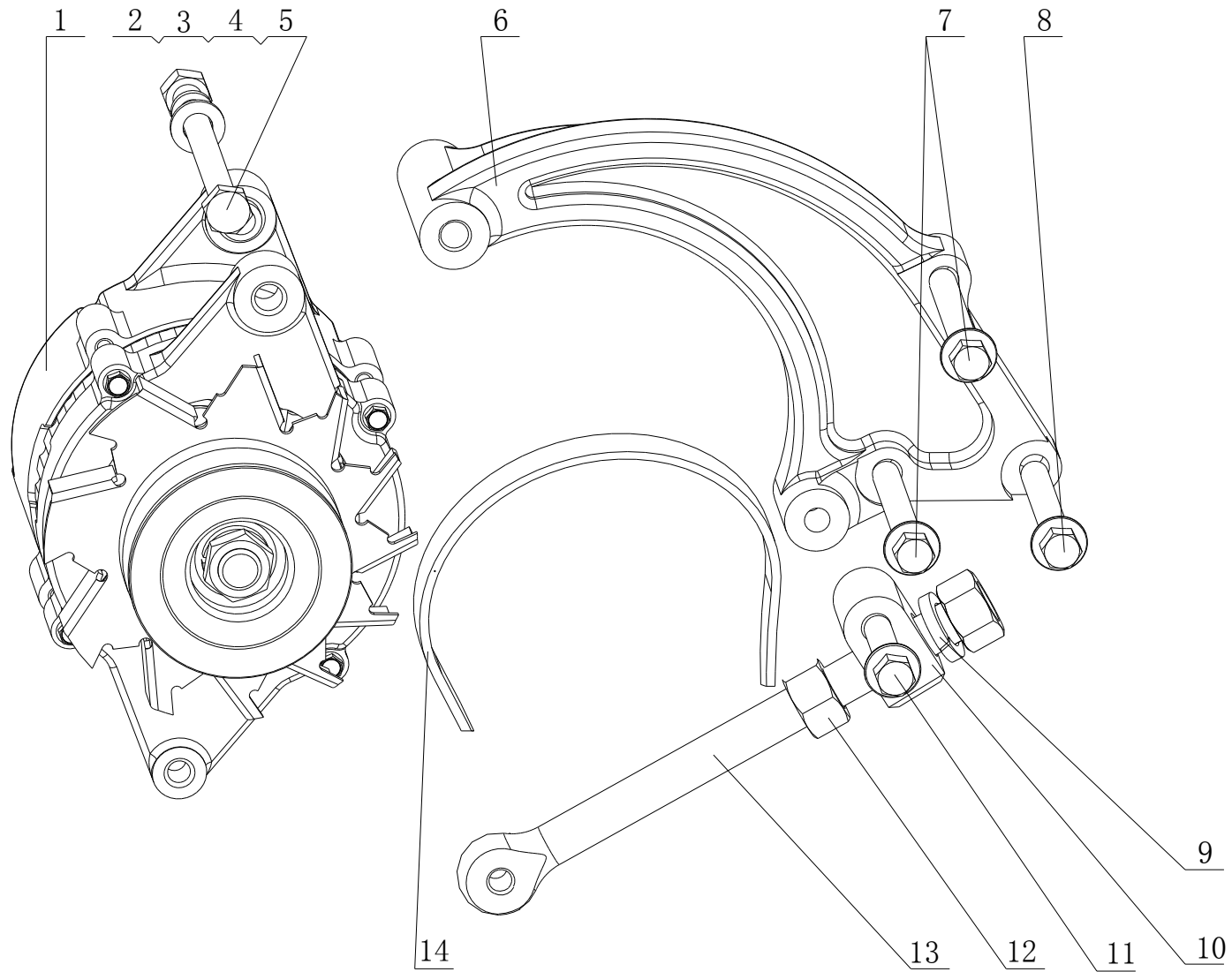


31、E0208-3509000/12 气动制空气压缩机总成 Pneumatic Air Compressor Assembly

| 序号 No. | 图 号 Part No. | 名 称 | Part Name | 数量 Qty. | 备 注 Remark |
|--------|----------------|------------|---|---------|------------|
| 1 | 231-3509024A | 空压机进水管 | Air compressor water inlet pipe | 1 | |
| 2 | Q/YC149-14 | 复合式密封垫圈 14 | Compound seal ring 14 | 4 | 易损件 EWP |
| 3 | 6QA6-1307017 | 管接螺栓 | pipe joint bolt | 2 | |
| 4 | 232C-3509060 | 空压机进气接头组件 | Air inlet joint groupware, air compressor | 1 | |
| 5 | G3220-3509017 | 锁紧螺母 | Locking nut | 1 | |
| 6 | G4606-3509014 | 密封垫片 | Seal washer | 1 | |
| 7 | Q1840820TF2 | 螺栓 M8X20 | Bolt M8X20 | 2 | |
| 8 | Q40308 | 垫圈 8 | Washer8 | 2 | |
| 9 | Q40108 | 垫圈 8 | Washer8 | 2 | |
| 10 | 2530-3509001 | 空压机齿轮 | Air compressor gear | 1 | |
| 11 | 6QA6-1307017 | 管接螺栓 | pipe joint bolt | 2 | |
| 12 | Q/YC149-14 | 复合式密封垫圈 14 | Compound seal ring 14 | 4 | 易损件 EWP |
| 13 | 1531-3509024A | 空压机进水管 | Air compressor water inlet pipe | 1 | |
| 14 | 2530-3509002 | 气泵垫片 | Air pump washer | 1 | |
| 15 | E0200-3509030B | 空压机进油管 | Air compressor oil inlet pipe | 1 | |
| 16 | 150-3509023 | 进油螺栓 | Oil inlet bolt | 2 | |
| 17 | Q/YC149-10 | 复合式密封垫圈 10 | Seal ring10 | 4 | |
| 18 | G0100-3509031 | 接头体 I | Connector I | 1 | |
| 19 | Q/YC149-22 | 复合式密封垫圈 22 | Seal ring 22 | 1 | |
| 20 | E0208-3509070 | 出气接头组件 | Air outlet union assembly | 1 | |
| 21 | Q/YC901-3C22 | 垫圈 22 | Washer22 | 1 | 易损件 EWP |
| 22 | E0208-3509100A | 空气压缩机 | Air compressor | 1 | |

EWP=Easy wear part (易损件)

32、E1108-3701000/01 发电机总成 Alternator Assembly

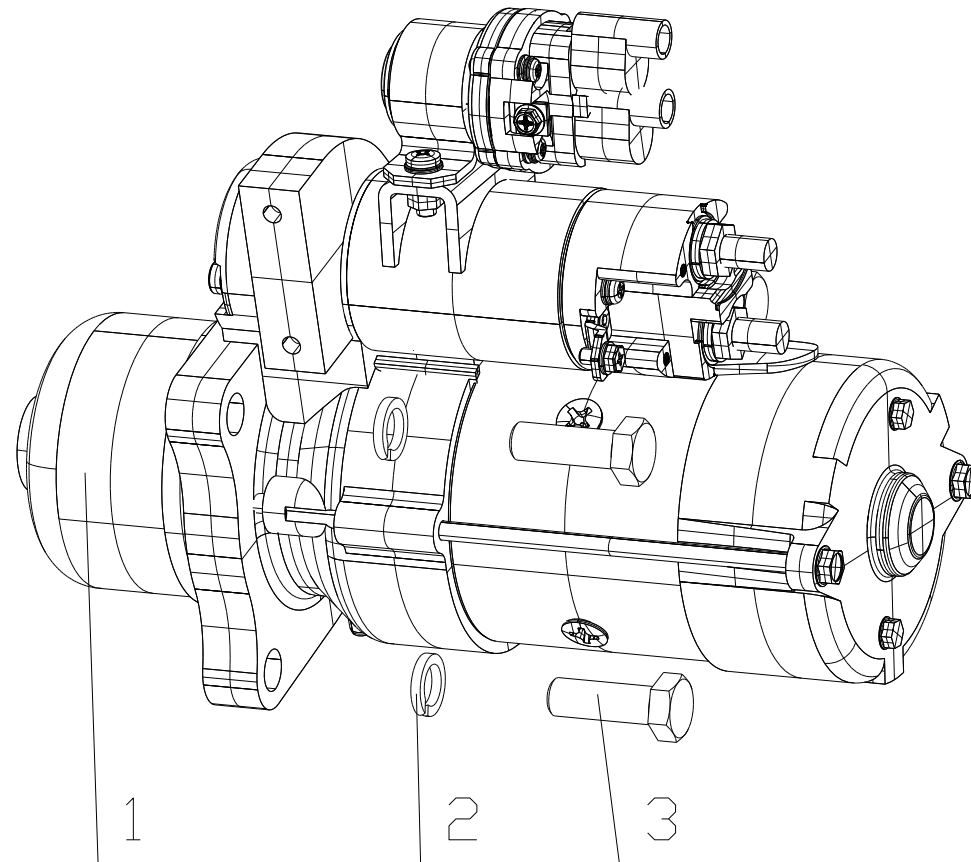


32、E1108-3701000/01 发电机总成 Alternator Assembly

| 序号 No. | 图 号 Part No. | 名 称 | Part Name | 数量 Qty. | 备 注 Remark |
|--------|----------------|------------|--------------------|---------|------------|
| 1 | E1108-3701100 | 发电机 | Alternator | 1 | 奥博 Aobo |
| 2 | Q340B10 | 螺母 M10 | Nut M10 | 1 | |
| 3 | Q40310 | 垫圈 10 | Washer10 | 1 | |
| 4 | Q40110 | 垫圈 10 | Washer10 | 1 | |
| 5 | Q150B10125 | 螺栓 M10X125 | Bolt M10X125 | 1 | |
| 6 | 1531B-3701002A | 发电机支架 | Alternator bracket | 1 | |
| 7 | Q1841080TF2 | 螺栓 M10X80 | Bolt M10X80 | 2 | |
| 8 | Q1841075TF2 | 螺栓 M10X75 | Bolt M10X75 | 1 | |
| 9 | Q40316 | 垫圈 16 | Washer16 | 1 | |
| 10 | D0110-3701032 | 滑块 | Slide block | 1 | |
| 11 | Q1841045TF2 | 螺栓 M10×45 | Bolt M10×45 | 1 | |
| 12 | Q340B16 | 螺母 M16 | Nut M16 | 2 | |
| 13 | J42L1-3701031 | 调节螺栓 | Adjusting bolt | 1 | |
| 14 | 1531B-3701040 | 三角胶带 B955 | V-belt | 1 | 易损件 EWP |

EWP=Easy wear part (易损件)

33、E24FC-3708000/01 起动机总成 Starter Assembly

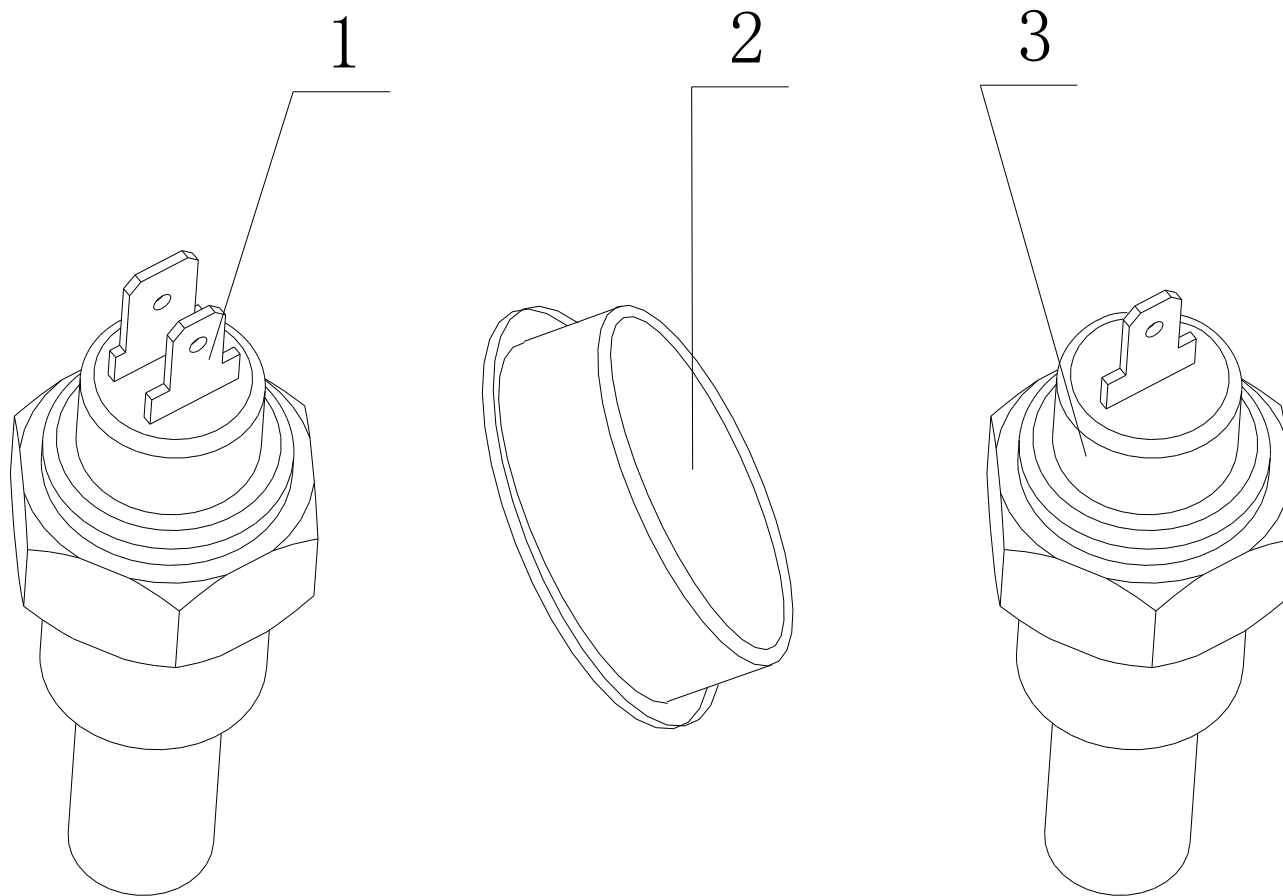


33、E24FC-3708000/01 起动机总成 Starter Assembly

| 序号 No. | 图 号 Part No. | 名 称 | Part Name | 数量 Qty. | 备 注 Remark |
|--------|-------------------|-----------|---------------------------|---------|---|
| 1 | G580G-3708100 | 起动机 | Starter assembly | 1 | 玉柴/神电/佩特莱 Yuchai/Shendian/Pre stolite |
| | G5800-3708-01-002 | 单向器 | Isolator | 1 | |
| | G5800-3708-02-002 | 磁吸开关组件 | Magnet switch subassembly | 1 | |
| 2 | Q40312 | 垫圈 12 | Washer 12 | 3 | |
| 3 | Q150B1235 | 螺栓 M12×35 | Bolt M12×35 | 3 | |

EWP=Easy wear part (易损件)

34、E3617-3800000/01 仪表感应器总成 Instrument & Sensor Assembly

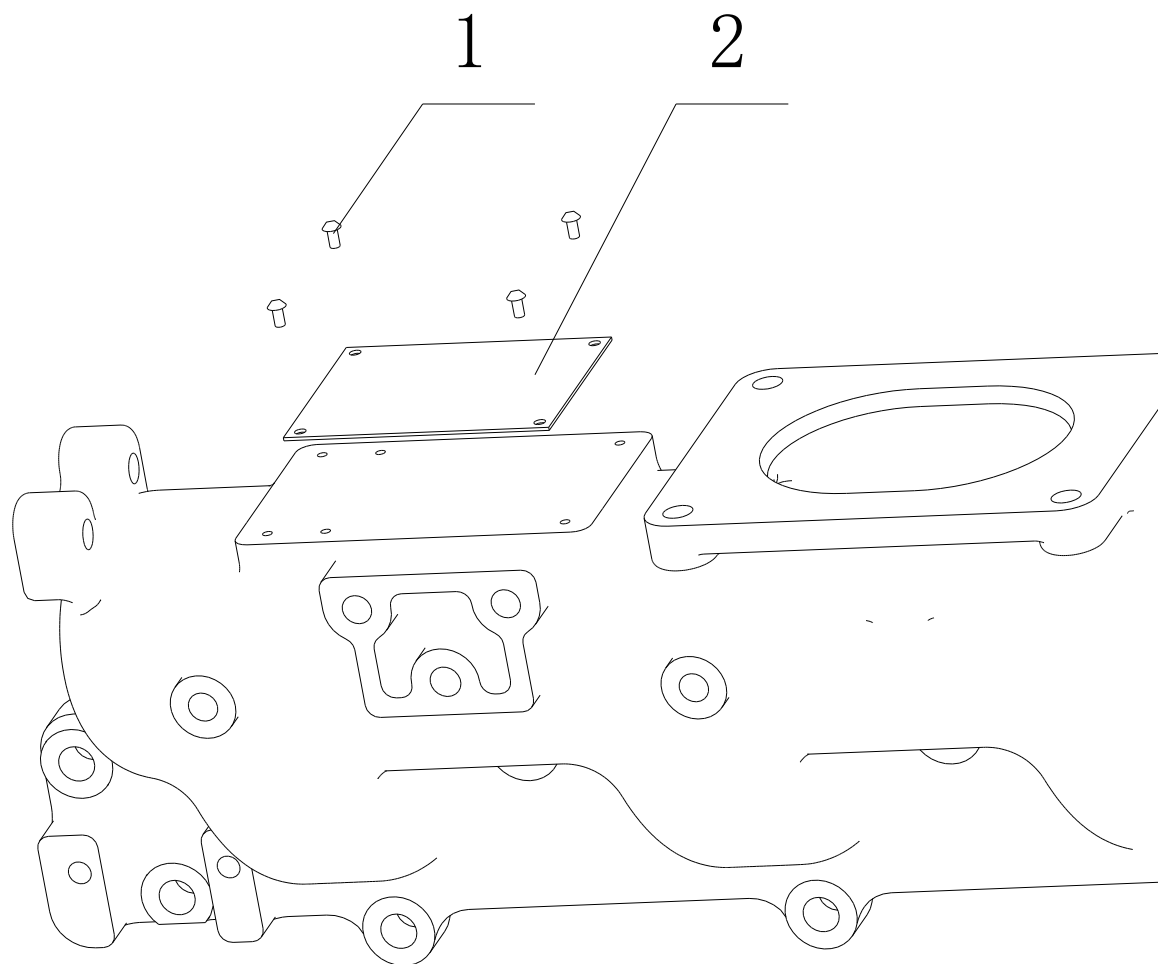


34、E3617-3800000/01 仪表感应器总成 Instrument& Sensor Assembly

| 序号 No. | 图 号 Part No. | 名 称 | Part Name | 数量 Qty. | 备 注 Remark |
|--------|---------------|---------|----------------------------|---------|------------|
| 1 | E1101-3800100 | 水温感应塞 | Water temperature sensor | 1 | |
| 2 | L3800-1600411 | 堵塞 | Plug | 1 | |
| 4 | D0110-3800400 | 油压过低报警器 | Too low oil pressure alarm | 1 | |

EWP=Easy wear part (易损件)

35、E3700-3904000/01 铭牌 Nameplate Assembly

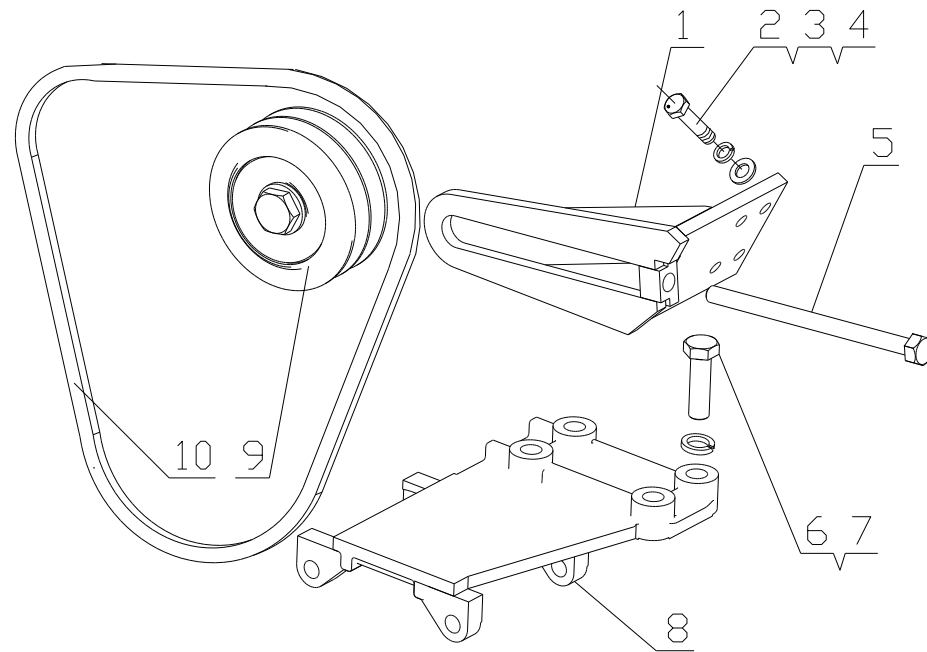


35、E3700-3904000/01 铭牌 Nameplate Assembly

| 序号 No. | 图 号 Part No. | 名 称 | Part Name | 数量 Qty. | 备 注 Remark |
|--------|--------------|---------------|-----------|---------|------------|
| 1 | YC394-AE3700 | 标牌 YC4E160-33 | Nameplate | 1 | |
| 2 | YC5-0306 | 铆钉 3X6 | Rivet 3×6 | 4 | |

EWP=Easy wear part (易损件)

36、E1299-8104000/01 空调压缩机总成 Air Compressor Assembly



36、E1299-8104000/01 空调压缩机总成 Air Compressor Assembly

| 序号 No. | 图 号 Part No. | 名 称 | Part Name | 数量 Qty. | 备 注 Remark |
|--------|----------------|-----------|--------------------------|---------|------------|
| 1 | E0250-8104340C | 张紧支架焊接件 | Tension bracket weldment | 1 | |
| 2 | Q150B0825 | 螺栓 M8X25 | Bolt M M8X25 | 4 | |
| 3 | Q40308 | 垫圈 8 | Lock washer 8 | 4 | |
| 4 | Q40108 | 垫圈 8 | Plane washer 8 | 4 | |
| 5 | 1584-3701035A | 调节螺栓 | Adjusting bolt | 1 | |
| 6 | Q150B1240TF2 | 螺栓 M12X40 | Bolt M12X40 | 4 | |
| 7 | Q40312 | 垫圈 12 | Lock washer 12 | 4 | |
| 8 | E0250-8104030 | 空调压缩机支架 | Air compressor bracket | 1 | |
| 9 | 186-1002120 | 张紧皮带轮组件 | Tension pulley assembly | 1 | |
| 10 | 1531-1307050 | 水泵皮带 | Water pump belt | 2 | 易损件 EWP |

EWP=Easy wear part (易损件)